

MULTI-UNIT DASSYSTEM

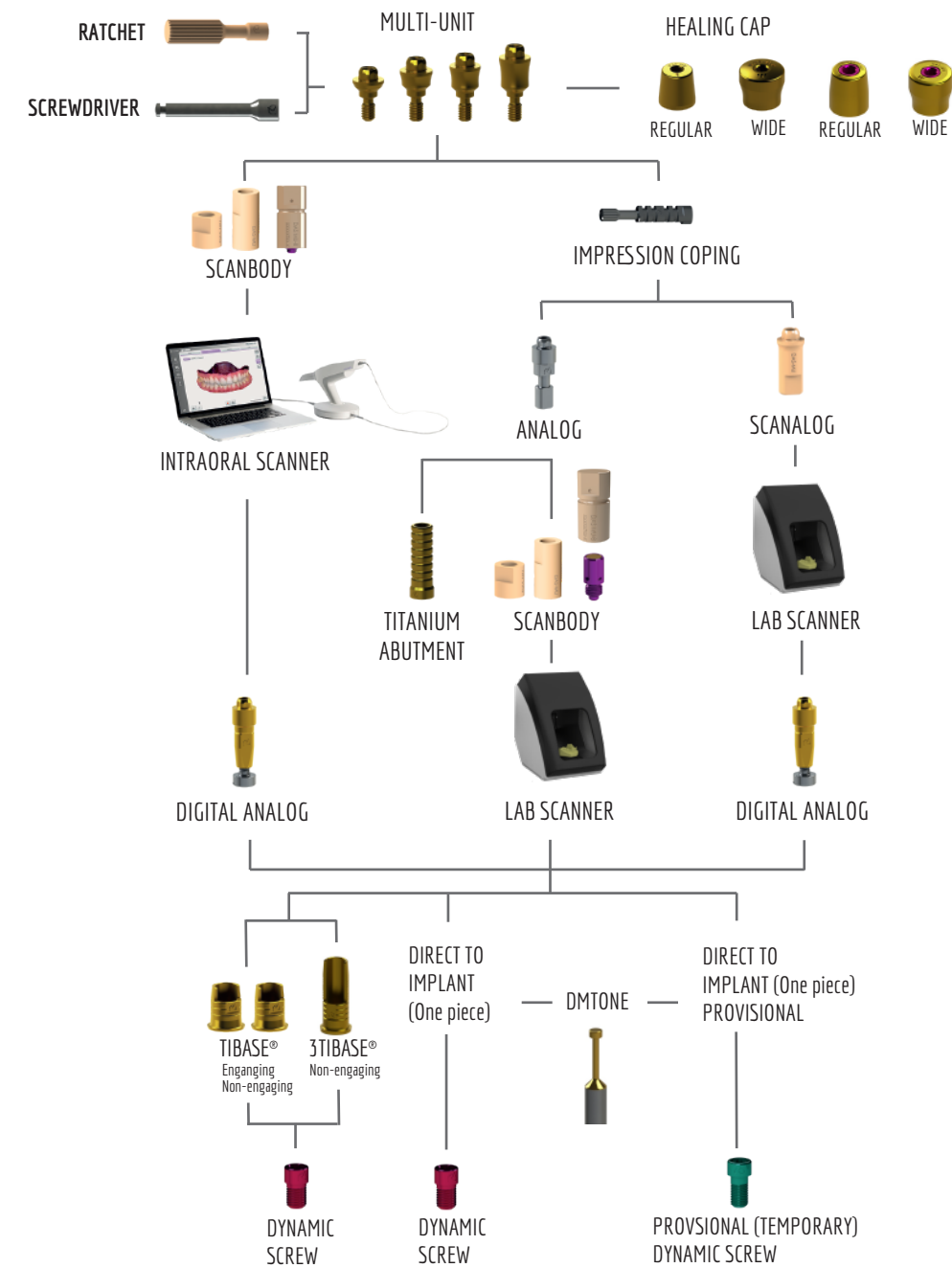
Work different, work better



DYNAMIC ABUTMENT® SOLUTIONS

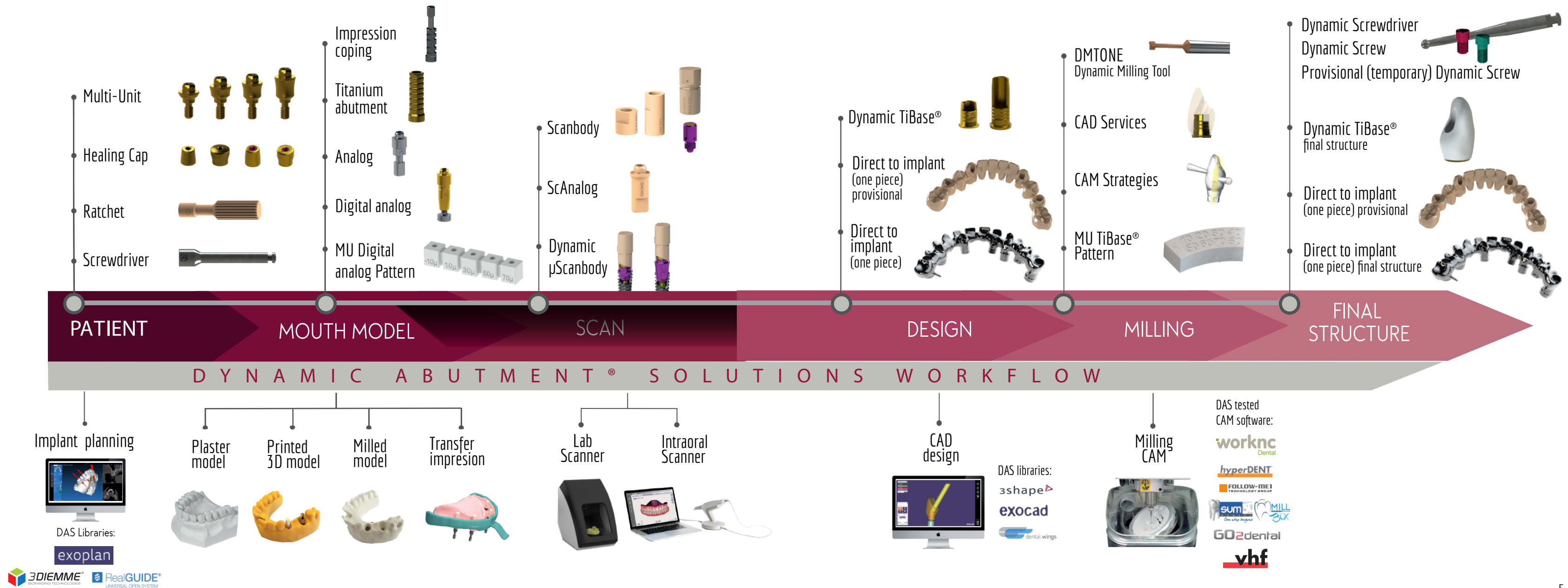
MULTI-UNIT DASSYSTEM

Work different, work better



Digital workflow from the beginning to the end of the work. With both intraoral and lab scanners. Also available with full analogue workflow.

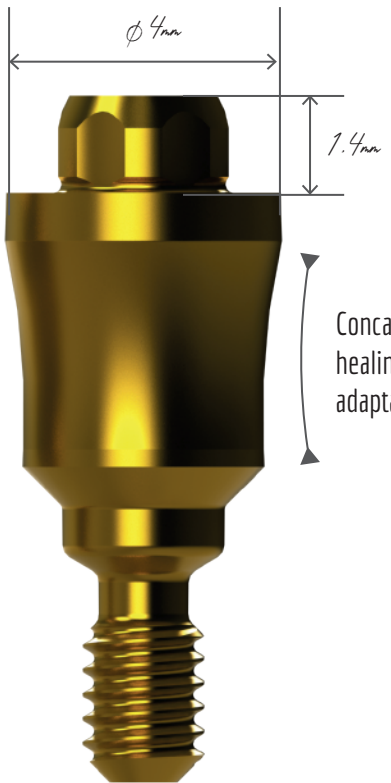
DIGITAL WORKFLOW - MULTI-UNIT DAS SYSTEM



MULTI-UNIT

The Multi-unit abutment has been carefully designed to rehabilitate partially or fully edentulous arches, as well as individual.

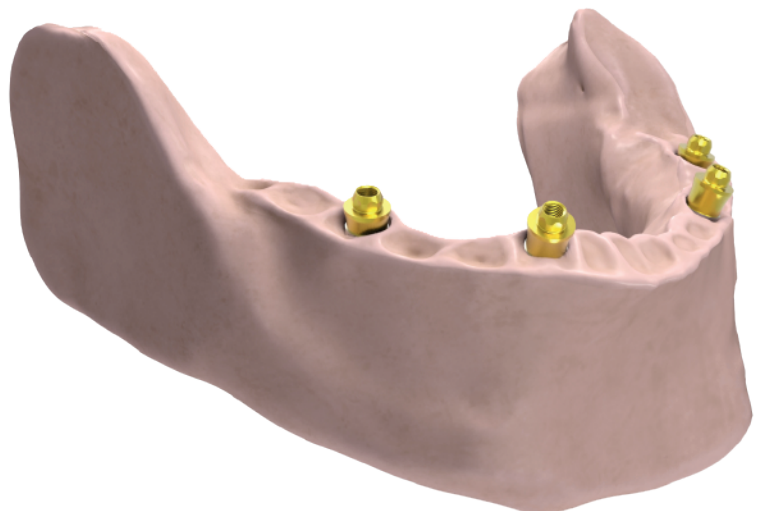
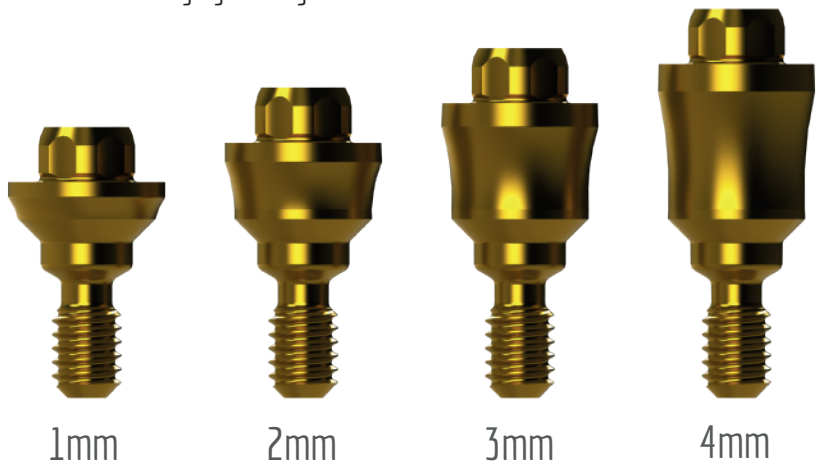
Maximum diameter of the MU is 4mm, being narrower it avoids contact with the bone



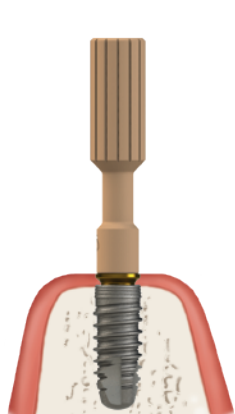
Lower cone height which allows greater disparelism than the classic multi-unit.
Divergence between implants: 50°

Concave design facilitates healing and soft tissue adaptation.

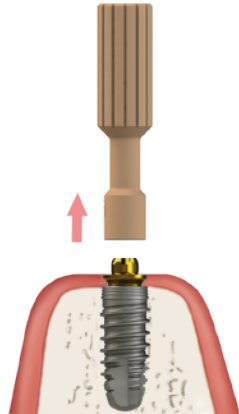
Available in 4 gingival heights.



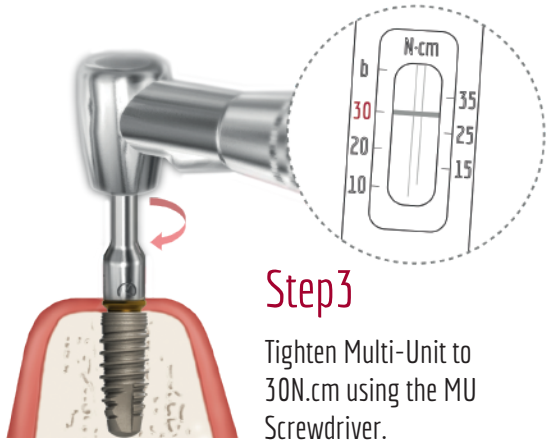
MU Insertion Procedure



Step1
Use the plastic gripping tool to attach the Multi-Unit to the implant.

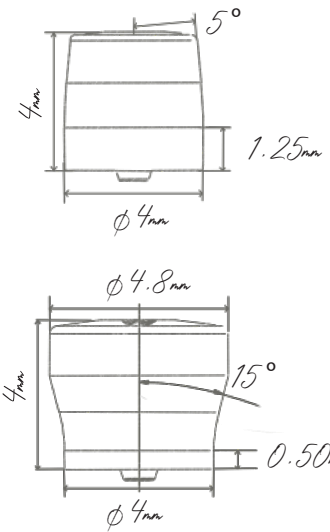
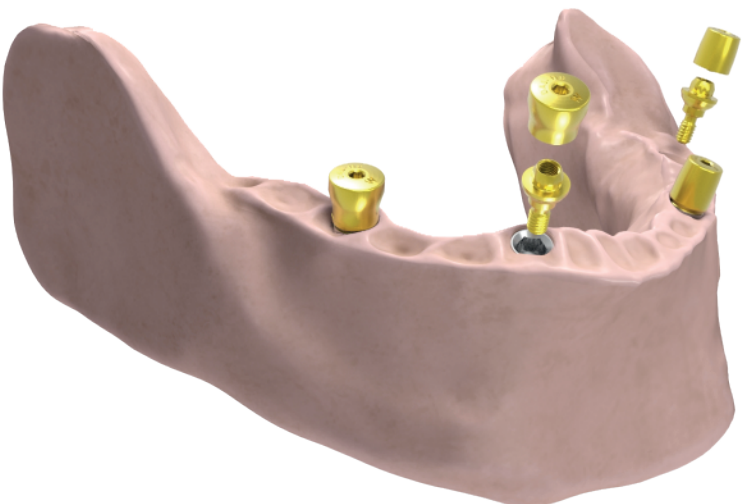


Step2
Remove the plastic tool.

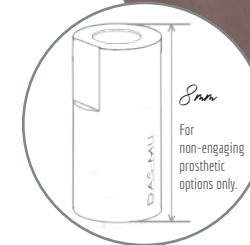
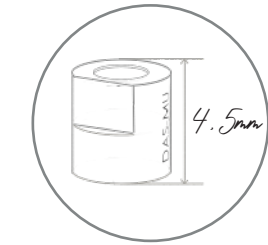


Step3
Tighten Multi-Unit to 30N.cm using the MU Screwdriver.

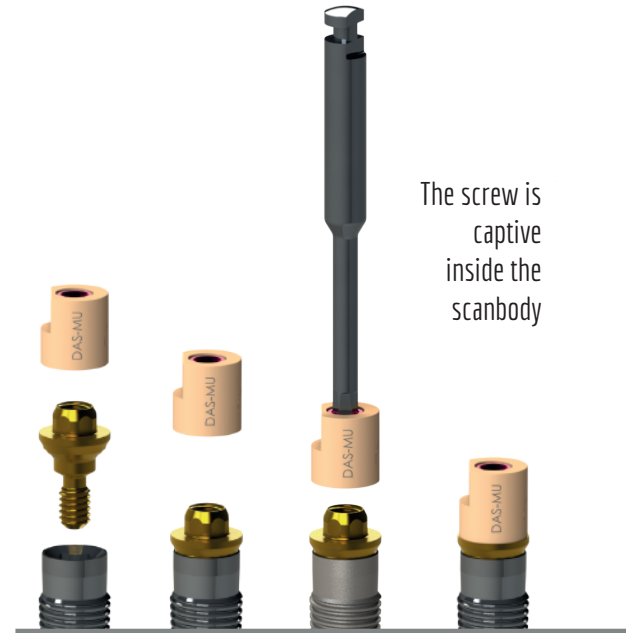
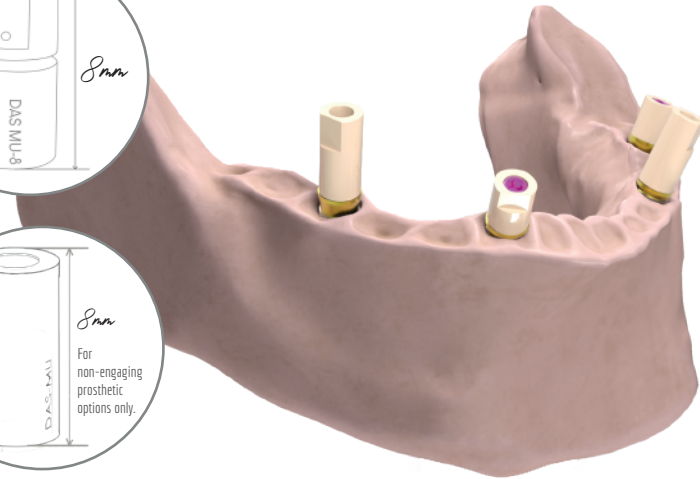
MU Healing Caps



MULTI-UNIT SCANBODY

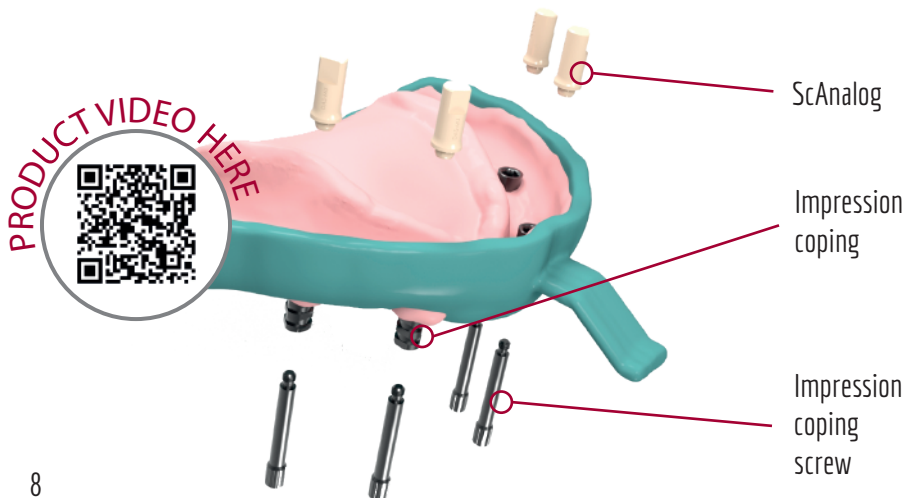


3 different scanbodies available in order to choose in which situation is better to use 4,5mm, 8mm or Dynamic μScanbody with magnet system.



The screw is captive inside the scanbody

MULTI-UNIT SCANALOG



ScAnalog

Impression coping

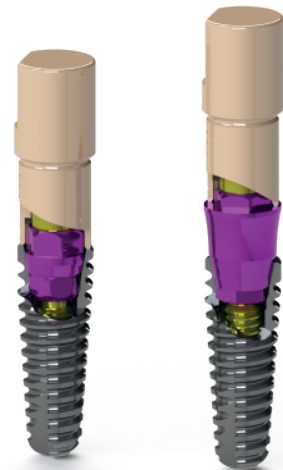
Impression coping screw

DYNAMIC μSCANBODY

All components of the Multi-Unit DAS System can also be used with the Dynamic μScanbody to scan direct to implant and select virtually the ideal gingival height Multi-unit.

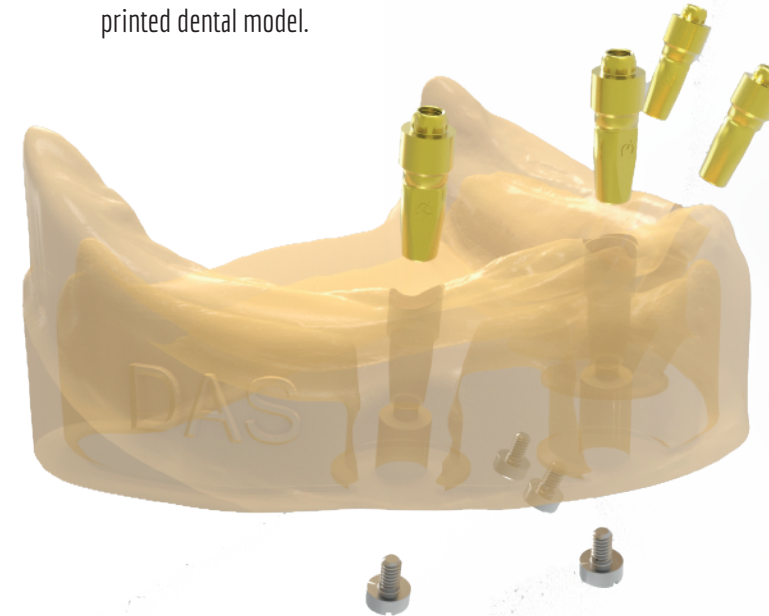
You can scan with the Dynamic μScanbody and then use the special Dynamic μScanbody library with the MU components.

For non-engaging prosthetic options only.



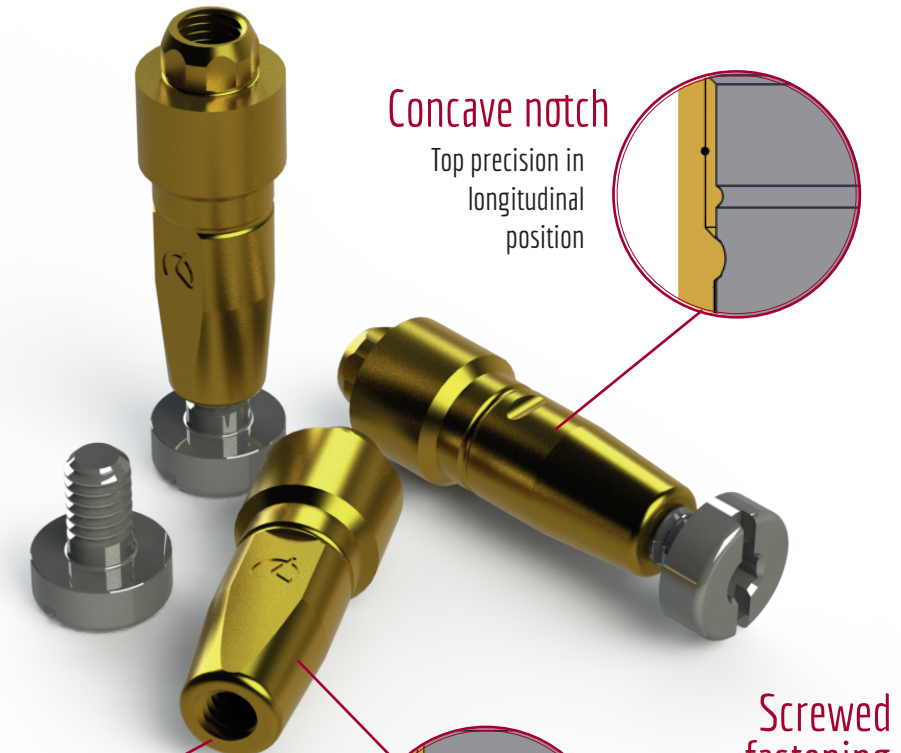
DIGITAL ANALOG

Digital analog of the dental implant to simulate implant position in a 3D printed dental model.



ANALOG

Also available traditional analog for plaster model.



Concave notch
Top precision in longitudinal position

Screwed fastening
Prevents the analog from moving in Z

Curved Surface
Accuracy of orientation guaranteed

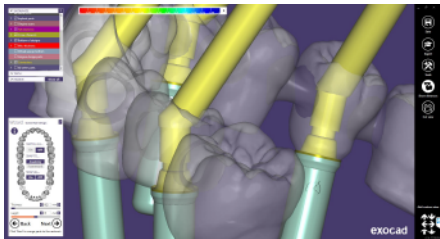
Longitudinal cut
Longitudinal cut to avoid rotation X-Y

DYNAMIC TIBASE®

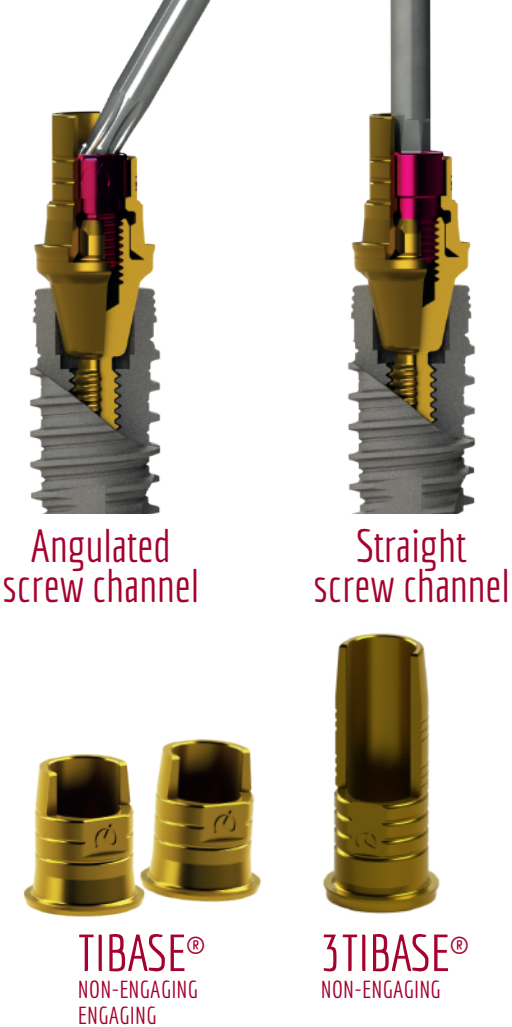
To correct ANGULATION up to 45°



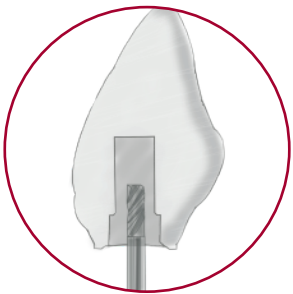
CAD DESIGN



DAS Multi-U nit system **allows** to **change** the **MU** in the **library** without rescanning or redesigning the case. That facilitates the lab and clinic work, as technician can change the MU without the need to make a new appointment with the patient to re-scan.
If we make a NR case, the option of changing MU is not allow in the design.



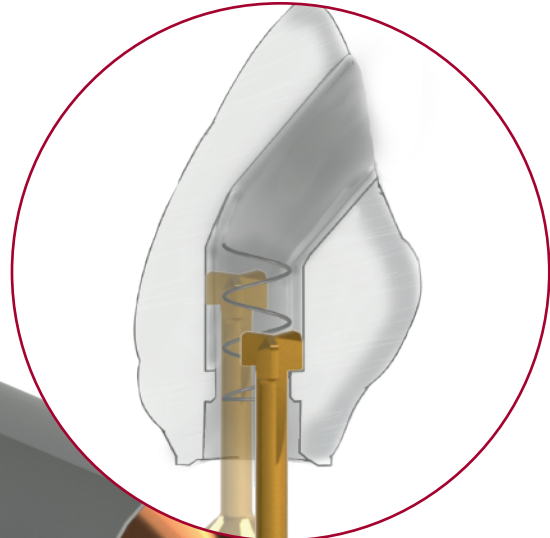
DIRECT TO IMPLANT (One piece)



Step 1
Crown with pre drill



Step 2
Crown with angled chanel



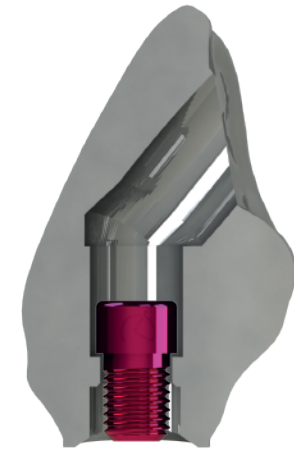
Step 3
DMTONE
Crown with Dynamic Milling Tool. Milling the screw seat and increasing the diameter of the straight channel.



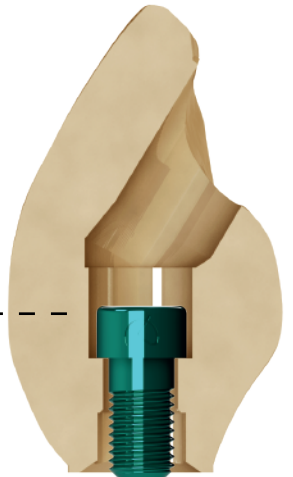
Dynamic screw



Provisional (temporary) Dynamic screw



Final restorations 0-45°
Direct to implant libraries available R/NR



Greater seating thickness
Greater contact surface between the screw and the material for greater safety in soft materials.

Provisional (temporary) restorations up to 35°
Provisional (temporary) Direct to implant libraries available R/NR

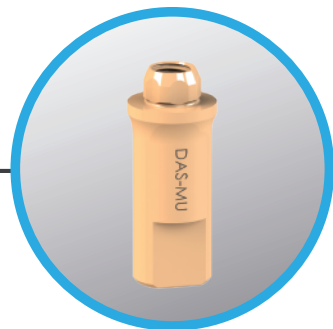
DAS MU LIBRARIES

DAS MU PREMIUM library



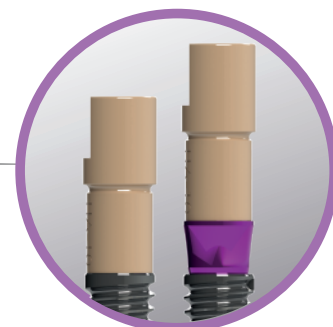
MU Scanbody

DAS_MU_4.5_XXXX*_PREMIUM
DAS_MU_8_XXXX*_PREMIUM
DAS_MU_DS8_XXXX*_PREMIUM



MU ScAnalog

DAS_MU_SA_XXXX*_PREMIUM



Dynamic μScanbody

DAS_MU_I/IG_XXXX*_PREMIUM

*XXXX= compatibility code

MU DAS SYSTEM COMPONENTS



Ratchet

49.409.000.01-2



Screwdriver

43.321.316.01-2



Healing Cap Regular

40.320.003.98-2



40.320.003.88-2 (Captive screw)



Healing Cap Wide

40.320.003.99-2



40.320.003.89-2 (Captive screw)



Impression coping

29.301.000.10-2 (Engaging)
29.301.000.11-2 (Non-engaging)



Analog

22.612.209.01-2



Titanium Abutment

35.312.209.21-2



Digital Analog

34.312.209.01-2



MU Scanbody 4,5mm

53.412.209.01-2



MU Scanbody 8mm

53.422.209.02-2 (R)



MU Dynamic μScanbody

52.408.137.01-2



Dynamic μScanbody adaptor

50.312.209.01-2



Screwdriver adaptor

43.621.410.01-2
43.624.410.01-2
43.630.410.01-2



MU ScAnalog

23.412.209.01-2



MU Dynamic TiBase®

31.312.209.01-2 (Engaging)



31.322.209.01-2 (Non-engaging)



MU Dynamic 3TiBase®

31.322.209.21-2 (Non-engaging)



Dynamic Screw

41.320.040.01-2



Provisional (temporary) Dynamic Screw

41.320.050.02-2



Straight Screw

40.320.003.06-2



Dynamic Screwdriver

43.618.201.01-2 (18mm)
43.624.201.01-2 (24mm)
43.632.201.01-2 (32mm)



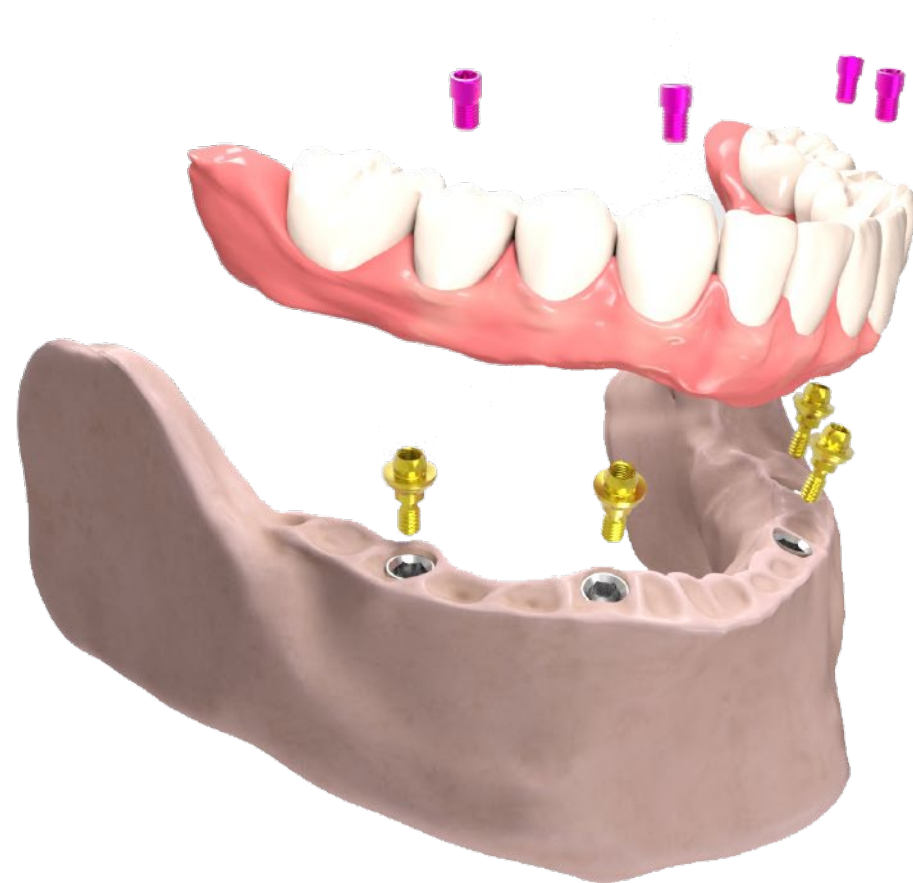
Screwdriver Hex.1,2

43.601.103.02-2



MU DMTone

33.390.716.01-2 Shank Ø3
33.490.716.01-2 Shank Ø4
33.690.716.01-2 Shank Ø6



LIST OF COMPATIBILITIES AVAILABLE

AB	CONEXÃO SISTEMA DE PRÓTESE	INTRA-LOCK	PROCLINIC
ACE	CORTEX	JDENTALCARE	RADHEX
ADIN	DENTIUM	KEystone	SEWON MEDIX
ALPHABIO	DIO IMPLANTS	KLOCKNER	SGS
ANCLADEN	DPS BIOMEDICAL	LEADER	SIGNO VINCES
ANKYLOS	EASY IMPLANT	MEDENTIS	SIN IMPLANTS
ANTHOGYR	ECKERMANN	MEGAGEN	SOUTHERN IMPLANTS
ARDS	ELITE MEDICA	MICRODENT	STERNGOLD
ASTRA	EUROTEKNIKA	MIS	STRAUMANN
AVINENT	GALIMPLANT	MOZO-GRAU	SYBRON IMPLANT SOLUTIONS
BEGO	GLOBAL D (TEKKA)	MPI	SYSTHEX
BIOCONCEPT	GMI (ILERIMPLANT)	NEODENT	TITANIUM - FIX
BIOGENESIS	GT MEDICAL	NEOBIOTECH	TRE-OSS
BIOHORIZONS	HAHN IMPLANT (GLIDEWELL)	NOBEL BIO CARE	TRI DENTAL IMPLANTS
BIOMET 3i	HI-TEC	NORIS MEDICAL	UFIT
BIONER	HIOSSEN	NORMON	VULKAN IMPLANTS
BIOTEC	IBS	OSSTEM IMPLANT	XIVE
BTI	IDO IMPLANTS	OSTEOPLUS	YES IMPLANT
BTK	IHDE DENTAL (IMBIODENT)	OXY	ZIMMER
B&W	IMPLANT DIRECT	PALTOP	
CAMLOG	IMPLANT GENESIS	PHIBO	

AB

✱ I2	
Implant: Ø 3,5/3,75/4,2/4,5/ 5/6	
Platform: Standard (Code 0040)	p. 30

✱ I22	
Implant: Ø 3,75/4,22	
Platform: Standard (Code 0040)	p. 30

✱ I5	
Implant: Ø 3,5/3,75/4,2/4,5/5/6/7/8	
Platform: Standard (Code 0040)	p. 30

✱ I55	
Implant: Ø 3,75/4,2/4,5/5/6/7/8	
Platform: Standard (Code 0040)	p. 30

✱ I10	
Implant: Ø 4,2/5	
Platform: Standard (Code 0040)	p. 30

✱ I15	
Implant: Ø 6/7/8	
Platform: Standard (Code 0040)	p. 30

ACE

✱ Infinity Internal Hex	
Implant: Ø 3,7/4,1	
Platform: 3,5 (Code 0040)	p. 30
Implant: Ø 3,75/4	
Platform: RP 4,1 (Code 0024)	p. 28

ADIN

✱ Swell	
Implant: Ø 3,3	
Platform: 3,45 (Code 0040)	p. 30
Implant: Ø 3,75/4,2	
Platform: 3,6 (Code 0040)	p. 30
Implant: Ø 5	
Platform: 4 (Code 0040)	p. 30
Implant: Ø 6	
Platform: 4,6 (Code 0040)	p. 30

✱ Touareg-S / Touareg-OS	
Implant: Ø 3,5	
Platform: 3,45 (Code 0040)	p. 30
Implant: Ø 3,75/4,2	
Platform: 3,6 (Code 0040)	p. 30
Implant: Ø 5	
Platform: 4 (Code 0040)	p. 30
Implant: Ø 6	
Platform: 5 (Code 0040)	p. 30

✱ Touareg CloseFit	
Implant: Ø 3,5	
Platform: RP (Code 0021)	p. 27

ALPHABIO

✱ Internal Hex Connection (IH) SPI	
Implant: Ø 3,3/3,75/4,2/5/6	
Platform: Universal (Code 0040)	p. 30

✱ Internal Hex Connection (IH) ICE	
Implant: Ø 3,7/3,75/4,2/4,65/5,3	
Platform: Universal (Code 0040)	p. 30

✱ Internal Hex Connection (IH) DFI	
Implant: Ø 3,3/3,75/4,2/4,5	
Platform: Universal (Code 0040)	p. 30

✱ Internal Hex Connection (IH) ATID	
Implant: Ø 3,3/3,75/4,2/5/6	
Platform: Universal (Code 0040)	p. 30

✱ Internal Hex Connection (IH) NEO	
Implant: Ø 3,75/4,2/5	
Platform: 3,5 (Code 0040)	p. 30

✱ Conical Standard Connection (CS)	
Implant: Ø 3,75/4,2/5	
Platform: Standard (Code 0169)	p. 33

ANTHOGYR

✱ Anthofit HE	
Implant: Ø 3,5/3,75/4	
Platform: R 4,1 (Code 0024)	p. 28

ANCLADEN

✱ Anclalock	
Implant: Ø 3,75/4,25/5	
Platform: 3,5 (Code 0040)	p. 30

ARDS

✱ Smart	
Implant: Ø 3,75/4,2/4,5	
Platform: 3,75 (Code 0040)	p. 30

✱ Classic	
Implant: Ø 3,75/4,2/4,5	
Platform: 3,75 (Code 0040)	p. 30
Implant: Ø 3,3/3,75/4,2/5/6	
Platform: 3,75 (Code 0040)	p. 30

✱ Premium	
Implant: Ø 3,3/3,75/4,2/5/6	
Platform: 3,75 (Code 0040)	p. 30

✱ CIT	
Implant: Ø 3,3/3,75/4,2/5/6	
Platform: 3,75 (Code 0040)	p. 30

ANKYLOS

✱ Ankylos	
Implant: Ø 3,5	
Platform: 3,5 (Code 0075)	p. 30

Implant: Ø 4,5	
Platform: 4,5 (Code 0075)	p. 30
Implant: Ø 5,5	
Platform: 5,5 (Code 0075)	p. 30

Implant: Ø 7	
Platform: 7 (Code 0075)	p. 30

ASTRA

✱ Aqua	
Implant: Ø 3,5/4	
Platform: Aqua (Code 0004)	p. 24

✱ Evolution (Internal)	
Implant: Ø 3,6	
Platform: 3,6 (Code 0006)	p. 25

Implant: Ø 4,2	
Platform: 4,2 (Code 00007)	p. 25
Implant: Ø 4,8	
Platform: 4,8 (Code 00091)	p. 30

AVINENT

✱ HI/IC	
Implant: Ø 3,1//3,5/4	
Platform: 3,5 (Code 0040)	p. 30

✱ HE/EC	
Implant: Ø 3,3/3,8/4/4,2/4,8/4,5/5	
Platform: 4,1 (Code 0024)	p. 28

BIOCONCEPT

✱ BC Bone Level	
Implant: Ø 3,3	
Platform: Narrow (Code 0033)	p. 29

Implant: Ø 4,1/4,8	
Platform: Regular (Code 0035)	p. 29
✱ BV Tapered Bone Level	
Implant: Ø 3,5	
Platform: Narrow (Code 0029)	p. 28

Implant: Ø 4,4/5/5	
Platform: Regular (Code 0030)	p. 28

BIOGENESIS

✱ 3Icon	
Implant: Ø 375/4/4,3/4,5	
Platform: Regular (Blue) (Code 0024)	p. 28

BIOHORIZONS

✱ Tapered Internal	
Implant: Ø 3,8	
Platform: 3,5 (Yellow) (Code 0040)	p. 30

Implant: Ø 3/3,4	
Platform: 3,5 (Grey) (Code 0102)	p. 31
✱ Internal	
Implant: Ø 3,5/4	
Platform: 3,5 (Yellow) (Code 0040)	p. 30

BIOMET 3i

✱ Certain	
Implant: Ø 3,25/4	
Platform: 3,4 (Code 0001)	p. 24

Implant: Ø 4/5	
Platform: 4,1 (Code 0001)	p. 24
✱ Osseotite External Hexagon	
Implant: Ø 3,75/4	
Platform: 4,1 (Code 0024)	p. 28

BIONER

✱ Hikelt	
Implant: Ø 3,8	
Platform: 3,95 (Code 0040)	p. 30

✱ Ikelt/Bikelt	
Implant: Ø 3,3/3,75/4	
Platform: 4,1 (Code 0024)	p. 28

✱ TopDM	
Implant: Ø 3,5	
Platform: 3,5 (Code 0021)	p. 27

Implant: Ø 4	
Platform: 4 (Code 0021)	p. 27
Implant: Ø 5	
Platform: 5 (Code 0021)	p. 27

BIOTEC

✱ SPR/CIM	
Implant: Ø 3,3	
Platform: 3,3 (Code 0040)	p. 30

Implant: Ø 3,75	
Platform: 3,75 (Code 0040)	p. 30
✱ SPR/SPTT/CIM	
Implant: Ø 4,2	
Platform: 4,2 (Code 0040)	p. 30

Implant: Ø 5	
Platform: 5 (Code 0040)	p. 30

BTI

✱ Interna Universal	
Implant: Ø 3,3/3,5/3,75/4/4,25	
Platform: Universal 4,1 (Code 0010)	p. 25

✱ Interna Universal Plus	
Implant: Ø 4,5/5/5,5	
Platform: Universal Plus 4,1 (Code 0010)	p. 25

✱ Interna	
Implant: Ø 3,3/3,5/3,75	
Platform: 3,5 (Code 0024)	p. 28

✱ External Universal	
Implant: Ø 3,75/4	
Platform: Universal 4,1 (Code 0024)	p. 28

✱ External Universal Plus	
Implant: Ø 4,5/5	
Platform: Universal Plus 4,1 (Code 0024)	p. 28

BTK

✱ Klassic / Konic	
Implant: Ø 3,25/4	
Platform: 3,5 IR (Code 0040)	p. 30

Implant: Ø 3,25 PL/3,75/4	
Platform: 4,1 ER (Code 0024)	p. 28

B&W

✱ Internal Hexagon CIH	
Implant: Ø 3,3/4	
Platform: 4 (Code 0040)	p. 30
Implant: Ø 3,75/4	
Platform: 4,1 (Code 0024)	p. 28

CAMLOG

✱ Conelog Screw-Line/Progressive-Line	
Implant: Ø 3,3	
Platform: 3,3 (Code 0119)	p. 31
Implant: Ø 3,8	
Platform: 3,8 (Code 0120)	p. 31
Implant: Ø 4,3	
Platform: 4,3 (Code 0121)	p. 32

CONEXÃO SISTEMA DE PRÓTESE

✱ Flash	
Implant: Ø 3,5/4,3/5	
Platform: Universal (Code 0021)	p. 27
✱ Torq	
Implant: Ø 3,5/3,75/4	
Platform: Universal (Code 0021)	p. 27
✱ Expand	
Implant: Ø 3,75/4/5	
Platform: Universal (Code 0021)	p. 27

CORTEX

✱ Dynamix	
Implant: Ø 3,3/3,8/4,2/5/6	
Platform: 3,75 (Code 0040)	p. 30
✱ Classix	
Implant: Ø 3,3/3,8/4,2/5/6	
Platform: 3,75 (Code 0040)	p. 30

✱ Saturn	
Implant: Ø 3,8/4,2	
Platform: 3,5 (Code 0040)	p. 30
✱ Conical Platform:	
Implant: Ø 3,3/3,8/4,2	
Platform: RP (Code 0004)	p. 24

✱ Magix	
Implant: Ø 3,3/3,8/4,2	
Platform: RP (Code 0004)	p. 24

DENTIS

✱ s-Clean	
Implant: Ø 3,7	
Platform: Mini (Code 0030)	p. 30
Implant: Ø 4,1/4,3	
Platform: Regular (Code 0030)	p. 30
Implant: Ø 4,8	
Platform: Wide (Code 0030)	p. 30

DENTIUM

✱ SuperLine and Implantium	
Implant: Ø 3,4	
Platform: 3,6 (Code 0030)	p. 28
Implant: Ø 3,8	
Platform: 4 (Code 0030)	p. 28
Implant: Ø 4,3	
Platform: 4,5 (Code 0030)	p. 28
Implant: Ø 4,8	
Platform: 5 (Code 0030)	p. 28
Implant: Ø 4,8	
Platform: 6 (Code 0030)	p. 28

DIO IMPLANTS

✱ UF II	
Implant: Ø 3,8/4/4,5/5/5,5	
Platform: Regular (Code 0030)	p. 28

✱ UF II Narrow	
Implant: Ø 3 / 3,3	
Platform: Narrow (Code 0014)	p. 26
✱ External	
Implant: Ø 3,75/4/4,5	
Platform: Regular 4,1 (Code 0024)	p. 28

DPS BIOMEDICAL

✱ External Hexagon	
Implant: Ø 3,75/4/5/3,5/3,8/4,3	
Platform: 4,1 (Code 0024)	p. 28

EASY IMPLANT

✱ Master C	
Implant: Ø 3,5	
Platform: 3,5 (Ocean) (Code 0004)	p. 24
Implant: Ø 4	
Platform: 4 (Ocean) (Code 0004)	p. 24
Implant: Ø 4,5	
Platform: 4,5 (Lilas) (Code 0030)	p. 28
Implant: Ø 5	
Platform: 5 (Lilas) (Code 0030)	p. 28

✱ Master S	
Implant: Ø 3,3	
Platform: 3,3 (Ocean) (Code 0004)	p. 24
Implant: Ø 3,75	
Platform: 3,75 (Lilas) (Code 0030)	p. 28
Implant: Ø 4,25	
Platform: 4,25 (Lilas) (Code 0030)	p. 28
Implant: Ø 4,75	
Platform: 4,75 (Lilas) (Code 0030)	p. 28

✱ Master L	
Implant: Ø 3,3	
Platform: 3,3 (Lilas) (Code 0030)	p. 28
Implant: Ø 3,75	
Platform: 3,75 (Lilas) (Code 0030)	p. 28

Implant: Ø 4,25	
Platform: 4,25 (Lilas) (Code 0030)	p. 28
Implant: Ø 4,75	
Platform: 4,75 (Lilas) (Code 0030)	p. 28

ECKERMAN

✱ Hexagon	
Implant: Ø 3/3,5/4/4,5/5	
Platform: 4,1 (Code 0024)	p. 28

ELITE MEDICA

✱ External Connection	
Implant: Ø 4	
Platform: Regular (Code 0024)	p. 28

EUROTEKNIKA

✱ Naturactis	
Implant: Ø 3,5	
Platform: 3,4 (Code 0004)	p. 24
Implant: Ø 4	
Platform: 3,8 (Code 0004)	p. 24
Implant: Ø 4,5	
Platform: 4,3 (Code 0004)	p. 24
Implant: Ø 5	
Platform: 4,8 (Code 0004)	p. 24

✱ Natea	
Implant: Ø 3,6/4,1/4,8	
Platform: Narrow (Code 0004)	p. 24
Implant: Ø 3,6/4,1/4,8	
Platform: Regular (Code 0004)	p. 24
Implant: Ø 6	
Platform: Wide (Code 0004)	p. 24

✱ Naturall	
Implant: Ø 3,5	
Platform: Narrow (Code 0004)	p. 24
Implant: Ø 4/4,5	
Platform: Regular (Code 0004)	p. 24
Implant: Ø 5	
Platform: Wide (Code 0004)	p. 24

✱ Uneva External Hexagon	
Implant: Ø 3,6	
Platform: 4,1 (Code 0024)	p. 28
Implant: Ø 4,1	
Platform: 4,1 (Code 0024)	p. 28

✱ Uneva (Platform Switching)	
Implant: Ø 4,8	
Platform: 4,1 (Code 0024)	p. 28
Implant: Ø 6	
Platform: 4,1 (Code 0024)	p. 28

GT MEDICAL

✱ Best Fit External Hexagon	
Implant: Ø 4,1	
Platform: Regular (Code 0024)	p. 28

GMI ILERIMPLANT

✱ Phoenix	
Implant: Ø 3,3/3,75/4	
Platform: Standard 4,1 (Code 0024)	p. 28

GALIMPLANT

✱ Internal Connection	
Implant: Ø 3,5	
Platform: 3,5 (Code 0004)	p. 24
Implant: Ø 4	
Platform: 4 (Code 0004)	p. 24
Implant: Ø 5	
Platform: 5 (Code 0004)	p. 24
✱ External Connection	
Implant: Ø 3,5/4	
Platform: 4 (Code 0024)	p. 28

GLOBAL D (TEKKA)

✱ In-Kone Universal	
Implant: Ø 3,5/4/4,5/5	
Platform: Universal (Code 0152)	p. 32

HAHN IMPLANT (GLIDEWELL)

✱ Hahn Tapered Implant	
Implant: Ø 3,5/4,3	
Platform: 3,5/4,3 (Code 0021)	p. 27
Implant: Ø 5	
Platform: 5 (Code 0022)	p. 27

HI-TEC

✱ Tapered Self Thread	
Implant: Ø 3,3/3,75	
Platform: 3,5 (Code 0040)	p. 30

✱ Logic Plus	
Implant: Ø 3,5	
Platform: 3,7 (Code 0040)	p. 30
Implant: Ø 4,3	
Platform: 3,9 (Code 0040)	p. 30

HIOSSEN

✱ ETTI SA/ETIII SA	
Implant: Ø 3,5	
Platform: Mini (Code 0029)	p. 28
Implant: Ø 4/4,5/5	
Platform: Regular (Code 0030)	p. 28

✱ ETTI BA	
Implant: Ø 3,5	
Platform: Mini (Code 0029)	p. 28
Implant: Ø 4/4,5/5	
Platform: Regular (Code 0030)	p. 28

IBS

✱ Magic FC	
Implant: Ø 4/4,5/5/5,5/6/6,5	
Platform: 3,8 (Code 0030)	p. 28
✱ N.R Fix	
Implant: Ø 3/3,5	
Platform: 3,8 (Code 0030)	p. 28

IDO IMPLANTS

✿ IDo Implant	
Implant: Ø 3,8/4/4,5/5/5,5/6/7	
Platform: Universal (Code 0030)	p. 28

IHDE DENTAL (IMBIODENT)

✿ Bone Level Plus	
Implant: Ø 3,3	
Platform: 3,3 (Code 0033)	p. 29
Implant: Ø 4,1	
Platform: 4,1 (Code 0035)	p. 29
Implant: Ø 4,8	
Platform: 4,8 (Code 0035)	p. 29

IMPLANT DIRECT

✿ Legacy	
Implant: Ø 3,7/4,2	
Platform: 3,5 (Code 0040)	p.30

✿ SwishActive	
Implant: Ø 3,3	
Platform: 3 (Code 0021)	p. 27
Implant: Ø 4,1/4,8	
Platform: 3,4 (Code 0022)	p. 27

✿ Interactive	
Implant: Ø 3,2/3,7	
Platform: 3 (Code 0021)	p. 27
Implant: Ø 4,3/5	
Platform: 3,4 (Code 0022)	p. 27

IMPLANT GENESIS

✿ Aktiv System	
Implant: Ø 3,5/3,75/4,2/5	
Platform: Standard (Code 0040)	p. 30

INTRA-LOCK

✿ IntraHex	
Implant: Ø 3,75/4	
Platform: 3,5 (Code 0040)	p. 30

✿ UniHex	
Implant: Ø 4	
Platform: Regular (Code 0024)	p. 28
Implant: Ø 4,75	
Platform: Wide (Code 0024)	p. 28

JDENTALCARE

✿ JDEvolution/JDEvolution Plus	
Implant: Ø 3,7	
Platform: 3,7 (Code 0040)	p. 30
Implant: Ø 4,3/5	
Platform: 4 (Code 0040)	p. 30
Implant: Ø 6	
Platform: 5 (Code 0040)	p. 30

✿ JD ICON	
Implant: Ø 3,9	
Platform: 3,9 (Code 0022)	p. 27

Implant: Ø 4,3	
Platform: 4 (Code 0022)	p. 27

Implant: Ø 5	
Platform: 4,7 (Code 0022)	p. 27

KEYSTONE

✿ Restore	
Implant: Ø 3,75/4	
Platform: RD 4,1 (Code 0024)	p. 28

KLOCKNER

✿ KL	
Implant: Ø 3,7/4,2	
Platform: Regular (Code 0024)	p. 28

LEADER

✿ Tixos Internal Hex	
Implant: Ø 3,3	
Platform: 3,5 (Code 0040)	p. 30

Implant: Ø 3,75	
Platform: 4 (Code 0040)	p. 30

✿ Tixos External Hex	
Implant: Ø 3,3/3,75	
Platform: 4,1 (Code 0024)	p. 28

MEDENTIS

✿ ICX - Templant	
Implant: Ø 3,75	
Platform: 3,75 (Code 0125)	p. 32
Implant: Ø4,1	
Platform: 4,1 (Code 0125)	p. 32
Implant: Ø 4,8	
Platform: 4,8 (Code 0125)	p. 32

MEGAGEN

✿ AnyRidge	
Implant: Ø 3,5	
Platform: Small (Code 0015)	p. 26

Implant: Ø 4/4,5	
Platform: Regular (Code 0015)	p. 26

Implant: Ø 5/5,5	
Platform: Wide (Code 0015)	p. 26

✿ AnyOne Internal	
Implant: Ø 3,5/4/4,5/5/6/7	
Platform: General (Code 0030)	p. 28

✿ AnyOne External	
Implant: Ø 4	
Platform: Regular 4,1 (Code 0024)	p. 28
Implant: Ø 4,5	
Platform: Regular 4,5 (Code 0024)	p. 28

✿ Mini Narrow Ridge	
Implant: Ø 3 / 3,4	
Platform: Mini (Code 0024)	p. 28

MICRODENT

✿ Universal	
Implant: Ø 3,3/3,5/3,75/4	
Platform: 4,1 (Code 0024)	p. 28

MIS

✿ Seven	
Implant: Ø 3,75/4,2	
Platform: Standard (Code 0040)	p. 30

✿ M4	
Implant: Ø 3,75/4,2	
Platform: Standard (Code 0040)	p. 30

✿ Lance	
Implant: Ø 3,75/4,2	
Platform: Standard (Code 0024)	p. 28

✿ C1	
Implant: Ø 3,3	
Platform: Narrow (Code 0016)	p. 26

Implant: Ø 3,75/4,2	
Platform: Standard (Code 0017)	p. 27

✿ V3	
Implant: Ø 3,9/4,3/5	
Platform: Standard (Code 0017)	p. 27

MOZO-GRAU

✿ MG Inhex	
Implant: Ø 3,75/4,25	
Platform: 2,8 Standard (Code 0004)	p. 24

✿ MG Osseous	
Implant: Ø 3,4/3,75/4,25	
Platform: 4,1 Standard (Code 0024)	p. 28

MPI

✿ Privilege CM	
Implant: Ø 3,5/4	
Platform: Regular (Code 0004)	p. 24

✿ Excellence CM	
Implant: Ø 3,5/4	
Platform: Regular (Code 0004)	p. 24

✿ HE Privilege	
Implant: Ø 3,3/4	
Platform: Platform 4,1 (Code 0024)	p. 28

NEODENT

✿ Helix GM/Drive GM/ Titamax GM	
Implant: Ø 3,5/3,75/4/4,3/5/6	
Platform: Regular (Code 0186)	p. 33

✿ Smart HE	
Implant: Ø 3,75/4	
Platform: 4,1 (Code 0024)	p.28

NEOBIOTECH

✿ IS Implant: System	
Implant: Ø 4	
Platform: Regular 4 (Code 0030)	p. 28

Implant: Ø 4,5	
Platform: Regular 4,5 (Code 0030)	p. 28

Implant: Ø 5	
Platform: Wide 5 (Code 0030)	p. 28

NOBEL BIOCARE

✿ Active	
Implant: Ø 3	
Platform: Mini 3.0 (Code 0159)	p. 33

Implant: Ø 3,5	
Platform: Narrow (Code 0021)	p. 27

Implant: Ø 4,3/5	
Platform: Regular (Code 0022)	p. 27

✿ NobelParallel	
Implant: Ø 3,75	
Platform: Narrow (Code 0021)	p. 27

Implant: Ø 4,3/5	
Platform: Regular (Code 0022)	p. 27

✿ Branemark	
Implant: Ø 3,75/4	
Platform: Regular (Code 0024)	p. 28

✿ Nobel Speedy	
Implant: Ø 4/5	
Platform: Regular (Code 0024)	p.28

NORIS MEDICAL

✿ Tuff	
Implant: Ø 3,3/3,75/4,2/5/6	
Platform: 3,75 (Code 0040)	p. 30

✿ Tuff TT	
Implant: Ø 3,3/3,75/4,2/5/6	
Platform: 3,75 (Code 0040)	p. 30

✿ Onix	
Implant: Ø 3,3/3,75/4,2/5/6	
Platform: 3,75 (Code 0040)	p. 30

✿ Cortical	
Implant: Ø 4,0/5/6	
Platform: 3,75 (Code 0040)	p. 30

✿ PteryCore	
Implant: Ø 4,2	
Platform: 3,75 (Code 0040)	p. 30

✿ PteryFit	
Implant: Ø 4,2	
Platform: 3,75 (Code 0040)	p. 30

NORMON IMPLANT

✿ Normon Implant HE	
Implant: Ø 3,25/3,75/4,25/4,75	
Platform: 4,1 (Code 0024)	p. 28

OSTEOPLUS

✦ Shi	Implant: Ø 3,3 / 3,75 / 4,2 Platform: 3,5 (Code 0040)	p. 30
-------	----------------------------------------------------------	-------

✦ She	Implant: Ø 3,75/4 Platform: 4 (Code 0024)	p.28
-------	----------------------------------------------	------

OSSTEM IMPLANT

✦ TS	Implant: Ø 3,5 Platform: Mini (Code 0029)	p. 28
------	----------------------------------------------	-------

	Implant: Ø 4/4,5/5/6/7 Platform: Regular (Code 0030)	p. 28
--	---------------------------------------------------------	-------

✦ US	Implant: Ø3,75/4/4,5 Platform: Regular 4,1 (Code 0024)	p. 28
------	-----------------------------------------------------------	-------

OXY

✦ MD Line Ext	Implant: Ø 3,75/4,25 Platform: Standard (Code 0024)	p. 28
---------------	--------------------------------------------------------	-------

PHIBO

✦ TSH/BNT Serie 3	Implant: Ø 3,6 Platform: 4 (Code 0024)	p. 28
-------------------	-------------------------------------------	-------

✦ TSH/BNT Serie 4	Implant: Ø 4,2 Platform: 4 (Code 0024)	p. 28
-------------------	-------------------------------------------	-------

PALTOP

✦ Conical Active	Implant: Ø 3,75/4,2/5 Platform: Standard (Code 0029)	p. 28
------------------	---------------------------------------------------------	-------

PROCLINIC

✦ Aqua CM	Implant: Ø 3,5/4/5 Platform: 2,82 (Code 0004)	p. 24
-----------	--------------------------------------------------	-------

✦ Cylindrical Internal/Conical Internal	Implant: Ø 3,3/3,75/4,25/5//3,5/4/5 Platform: 3,5 (Code 0040)	p. 30
-----------------------------------------	------------------------------------------------------------------	-------

✦ Cylindrical External/Conical External	Implant: Ø 3,75/4,25/3,5/4 Platform: 4,1 Standard (Code 0024)	p. 28
-----------------------------------------	------------------------------------------------------------------	-------

RADHEX

✦ PHE	Implant: Ø 4/4,5/5 Platform: 4,1 (Code 0024)	p. 28
-------	-------------------------------------------------	-------

SEWON MEDIX

✦ IH2 SLA SYSTEM	Implant: Ø 3,5 Platform: Mini (Code 0029)	p. 28
	Implant: Ø 3,5/4/4,5/5 Platform: Regular (Code 0030)	p. 28

✦ IH2 RBM SYSTEM	Implant: Ø 3,5 Platform: Mini (Code 0029)	p. 28
	Implant: Ø 3,5/4/4,5/5 Platform: Regular (Code 0030)	p. 28

SGS

✦ P1	Implant: Ø 3,2/3,75/4,2/5/6 Platform: 3,75 (Code 0040)	p. 30
------	-----------------------------------------------------------	-------

✦ P7	Implant: Ø 3,2/3,75/4,2/4,5/5/6 Platform: 3,75 (Code 0040)	p. 30
------	---------------------------------------------------------------	-------

SIGNO VINCES

✦ Duo	Implant: Ø 4,6 Platform: 4,1 (Code 0024)	p. 28
-------	---------------------------------------------	-------

✦ Inttegra	Implant: Ø 3,75/4 Platform: 4,1 (Code 0024)	p. 28
------------	------------------------------------------------	-------

✦ Compact	Implant: Ø 4,5 Platform: CM3,8 (Code 0004)	p. 24
-----------	-----------------------------------------------	-------

✦ Duocon	Implant: Ø 3,8 Platform: CM3,8 (Code 0004)	p. 24
----------	-----------------------------------------------	-------

✦ Infra	Implant: Ø 3,3/3,8/4,6 Platform: CM (Code 0004)	p. 24
---------	----------------------------------------------------	-------

SIN IMPLANTS

✦ HI SW	Implant: Ø 3,8 Platform: 3,8 (Code 0039)	p. 29
---------	---------------------------------------------	-------

✦ Tryon	Implant: Ø 325/3,75/4 Platform: 4,1 (Code 0024)	p. 28
---------	----------------------------------------------------	-------

✦ Tryon CO	Implant: Ø 4 Platform: 4,1 (Code 0024)	p. 28
------------	-------------------------------------------	-------

✦ Revolution	Implant: Ø 3,25/3,75/4 Platform: 4,1 (Code 0024)	p.28
--------------	-----------------------------------------------------	------

✦ Stylus	Implant: Ø 4 Platform: 4,1 (Code 0024)	p.28
----------	-------------------------------------------	------

SOUTHERN IMPLANTS

✦ Deep Conical	Implant: Ø 3,5/4 Platform: 2,95/3,1 (Code 0004)	p. 24
----------------	----------------------------------------------------	-------

✦ Internal Hex	Implant: Ø 3,75/4,2/5 Platform: Universal (Code 0040)	p. 30
----------------	----------------------------------------------------------	-------

✦ External Hex	Implant: Ø 3,75/4 Platform: 4,1 (Code 0024)	p. 28
----------------	------------------------------------------------	-------

STERNGOLD

✦ STERN HEX	Implant: Ø 3,75/4/4,5 Platform: 4,1 (Code 0024)	p. 28
-------------	----------------------------------------------------	-------

STRAUMANN

✦ Bone Level	Implant: Ø 3,3 Platform: NC- 3,3 (Code 0033)	p. 29
--------------	-------------------------------------------------	-------

	Implant: Ø 4,1 Platform: RC-4,1 (Code 0035)	p. 29
--	------------------------------------------------	-------

	Implant: Ø 4,8 Platform: RC-4,8 (Code 0035)	p. 29
--	------------------------------------------------	-------

✦ BLX	Implant: Ø 3,5/3,75/4/4,5 Platform: RB (Regular Base) (Code 0207)	p. 34
-------	----------------------------------------------------------------------	-------

SYBRON IMPLANTS

✦ Endopore (Innova)	Implant: Ø 4,1 Platform: 4,1 (Code 0024)	p. 28
---------------------	---------------------------------------------	-------

SYSTHEX

✦ Classic-ci / Estetic-ci	Implant: Ø 3,5/3,75/4 Platform: 4,1 (Code 0024)	p. 28
---------------------------	----------------------------------------------------	-------

TITANIUM-FIX

✦ b-fix	Implant: Ø 3,5/4 Platform: Regular (Code 0004)	p. 24
---------	---------------------------------------------------	-------

TRE-OSS

✦ Simple	Implant: Ø 3,3/3,75/5 Platform: 3,75 Amarillo (Code 0040)	p. 30
----------	--------------------------------------------------------------	-------

✦ Rapid/Anatomic	Implant: Ø 3,75/4 Platform: 4,1 Amarillo (Code 0024)	p. 28
------------------	---------------------------------------------------------	-------

TRI DENTAL IMPLANTS

✦ TRI-Vent	Implant: Ø 3,75/4,1/4,7 Platform: 3,5 (Code 0040)	p. 30
------------	------------------------------------------------------	-------

TRINON

✦ Q2	Implant: Ø 3,5/3,75/4,5 Platform: 4 (Code 0024)	p. 28
------	----------------------------------------------------	-------

UFIT

✦ Gt2	Implant: Ø 3,5 Platform: Mini (Code 0004)	p. 24
-------	----------------------------------------------	-------

✦ Nt2	Implant: Ø 3,5 Platform: Mini (Code 0004)	p. 24
-------	----------------------------------------------	-------

VULKAN IMPLANTS

✦ IN-Hex	Implant: Ø 3,3/3,75/4,2/5 Platform: 3,75 (Code 0040)	p. 30
----------	---------------------------------------------------------	-------

XIVE

✦ Xive	Implant: Ø 3,8 Platform: 3,8 (Code 0039)	p. 29
--------	---------------------------------------------	-------

YES IMPLANT

✦ S-SYSTEM	Implant: Ø 3,3/3,5 Platform: Narrow (Code 0030)	p. 28
	Implant: Ø 4/4,5 Platform: Regular (Code 0030)	p. 28
	Implant: Ø 5/5,5 Platform: Wide (Code 0030)	p. 28

ZIACOM

✦ OEX	Implant: Ø 3,75/4,25 Platform: RP 4,1 (Code 0024)	p. 28
-------	------------------------------------------------------	-------

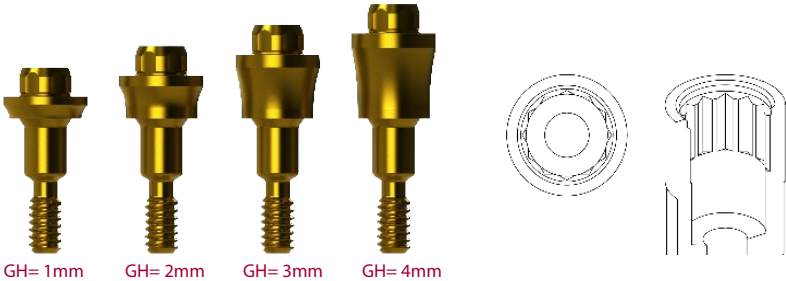
ZIMMER

✦ Screw-Vent	Implant: Ø 3,7/4,1 Platform: 3,5 (Code 0040)	p. 30
--------------	-------------------------------------------------	-------

COMPATIBLE with 0001

MULTI-UNIT				
	GINGIVAL HEIGHT	GINGIVAL HEIGHT	GINGIVAL HEIGHT	GINGIVAL HEIGHT
	1 mm	2 mm	3 mm	4 mm
R	42.302.001.01-2	42.302.001.02-2	42.302.001.03-2	42.302.001.04-2

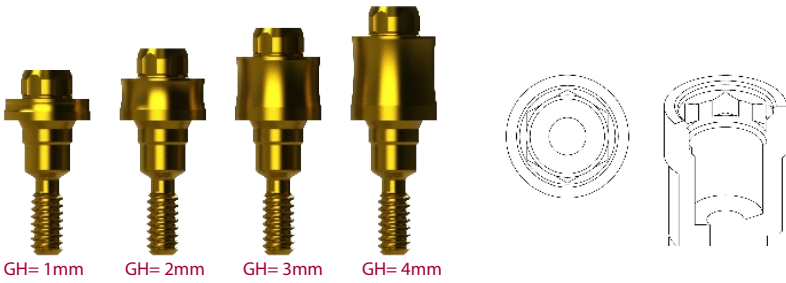
DAS LIBRARIES:
MU SCANBODY DAS_MU_4.5_0001_PREMIUM
DAS_MU_8_0001_PREMIUM
DAS_MU_DS8_0001_PREMIUM
MU SCANALOG DAS_MU_SA_0001_PREMIUM
DYNAMIC μSCANBODY DAS_MU_I/IG_0001_PREMIUM



COMPATIBLE with 0002

MULTI-UNIT				
	GINGIVAL HEIGHT	GINGIVAL HEIGHT	GINGIVAL HEIGHT	GINGIVAL HEIGHT
	1 mm	2 mm	3 mm	4 mm
R	42.303.002.01-2	42.303.002.02-2	42.303.002.03-2	42.303.002.04-2

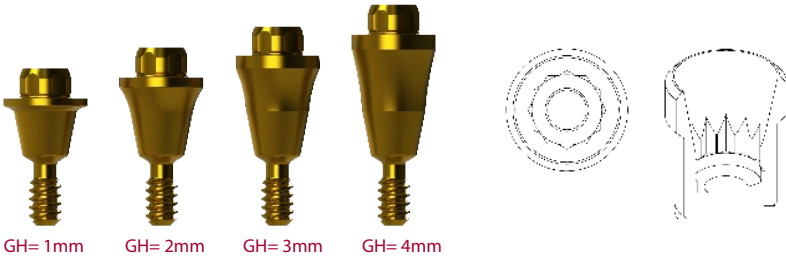
DAS LIBRARIES:
MU SCANBODY DAS_MU_4.5_0002_PREMIUM
DAS_MU_8_0002_PREMIUM
DAS_MU_DS8_0002_PREMIUM
MU SCANALOG DAS_MU_SA_0002_PREMIUM
DYNAMIC μSCANBODY DAS_MU_I/IG_0002_PREMIUM



COMPATIBLE with 0004

MULTI-UNIT				
	GINGIVAL HEIGHT	GINGIVAL HEIGHT	GINGIVAL HEIGHT	GINGIVAL HEIGHT
	1 mm	2 mm	3 mm	4 mm
R	42.303.004.01-2	42.303.004.02-2	42.303.004.03-2	42.303.004.04-2

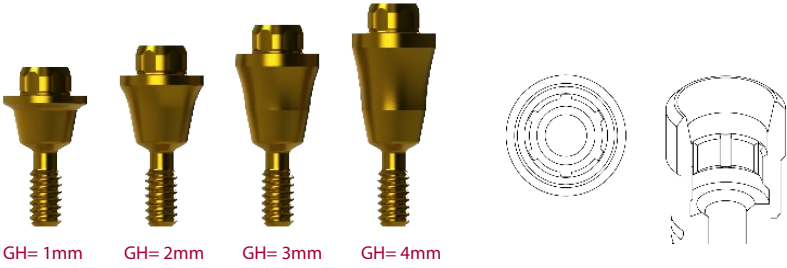
DAS LIBRARIES:
MU SCANBODY DAS_MU_4.5_0004_PREMIUM
DAS_MU_8_0004_PREMIUM
DAS_MU_DS8_0004_PREMIUM
MU SCANALOG DAS_MU_SA_0004_PREMIUM
DYNAMIC μSCANBODY DAS_MU_I/IG_0004_PREMIUM



COMPATIBLE with 0006

MULTI-UNIT				
	GINGIVAL HEIGHT	GINGIVAL HEIGHT	GINGIVAL HEIGHT	GINGIVAL HEIGHT
	1 mm	2 mm	3 mm	4 mm
R	42.302.006.01-2	42.302.006.02-2	42.302.006.03-2	42.302.006.04-2

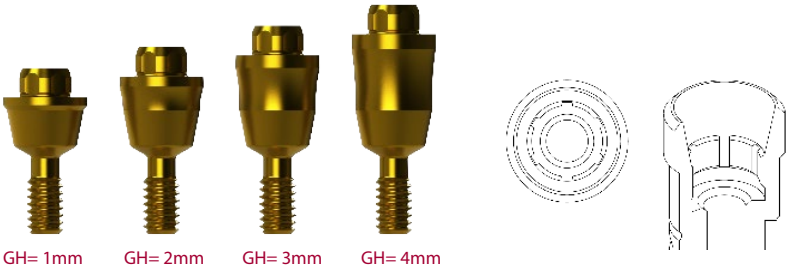
DAS LIBRARIES:
MU SCANBODY DAS_MU_4.5_0006_PREMIUM
DAS_MU_8_0006_PREMIUM
DAS_MU_DS8_0006_PREMIUM
MU SCANALOG DAS_MU_SA_0006_PREMIUM
DYNAMIC μSCANBODY DAS_MU_I/IG_0006_PREMIUM



COMPATIBLE with 0007

MULTI-UNIT				
	GINGIVAL HEIGHT	GINGIVAL HEIGHT	GINGIVAL HEIGHT	GINGIVAL HEIGHT
	1 mm	2 mm	3 mm	4 mm
R	42.303.007.01-2	42.303.007.02-2	42.303.007.03-2	42.303.007.04-2

DAS LIBRARIES:
MU SCANBODY DAS_MU_4.5_0007_PREMIUM
DAS_MU_8_0007_PREMIUM
DAS_MU_DS8_0007_PREMIUM
MU SCANALOG DAS_MU_SA_0007_PREMIUM
DYNAMIC μSCANBODY DAS_MU_I/IG_0007_PREMIUM



COMPATIBLE with 0010

MULTI-UNIT				
	GINGIVAL HEIGHT	GINGIVAL HEIGHT	GINGIVAL HEIGHT	GINGIVAL HEIGHT
	1 mm	2 mm	3 mm	4 mm
R	42.303.010.01-2	42.303.010.02-2	42.303.010.03-2	42.303.010.04-2

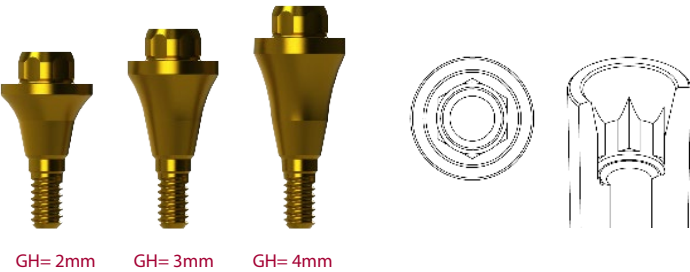
DAS LIBRARIES:
MU SCANBODY DAS_MU_4.5_0010_PREMIUM
DAS_MU_8_0010_PREMIUM
DAS_MU_DS8_0010_PREMIUM
MU SCANALOG DAS_MU_SA_0010_PREMIUM
DYNAMIC μSCANBODY DAS_MU_I/IG_0010_PREMIUM



COMPATIBLE with 0014

MULTI-UNIT				
	GINGIVAL HEIGHT	GINGIVAL HEIGHT	GINGIVAL HEIGHT	GINGIVAL HEIGHT
	1 mm	2 mm	3 mm	4 mm
R	-	42.302.014.02-2	42.302.014.03-2	42.302.014.04-2

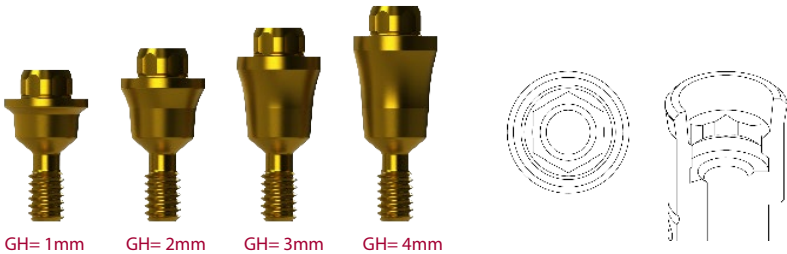
DAS LIBRARIES:
MU SCANBODY DAS_MU_4.5_0014_PREMIUM
DAS_MU_8_0014_PREMIUM
DAS_MU_DS8_0014_PREMIUM
MU SCANALOG DAS_MU_SA_0014_PREMIUM
DYNAMIC μSCANBODY DAS_MU_I/IG_0014_PREMIUM



COMPATIBLE with 0015

MULTI-UNIT				
	GINGIVAL HEIGHT	GINGIVAL HEIGHT	GINGIVAL HEIGHT	GINGIVAL HEIGHT
	1 mm	2 mm	3 mm	4 mm
R	42.303.015.01-2	42.303.015.02-2	42.303.015.03-2	42.303.015.04-2

DAS LIBRARIES:
MU SCANBODY DAS_MU_4.5_0015_PREMIUM
DAS_MU_8_0015_PREMIUM
DAS_MU_DS8_0015_PREMIUM
MU SCANALOG DAS_MU_SA_0015_PREMIUM
DYNAMIC μSCANBODY DAS_MU_I/IG_0015_PREMIUM



COMPATIBLE with 0016

MULTI-UNIT				
	GINGIVAL HEIGHT	GINGIVAL HEIGHT	GINGIVAL HEIGHT	GINGIVAL HEIGHT
	1 mm	2 mm	3 mm	4 mm
R	-	42.302.016.02-2	-	-

DAS LIBRARIES:
MU SCANBODY DAS_MU_4.5_0016_PREMIUM
DAS_MU_8_0016_PREMIUM
DAS_MU_DS8_0016_PREMIUM
MU SCANALOG DAS_MU_SA_0016_PREMIUM
DYNAMIC μSCANBODY DAS_MU_I/IG_0016_PREMIUM



COMPATIBLE with 0017

MULTI-UNIT				
	GINGIVAL HEIGHT	GINGIVAL HEIGHT	GINGIVAL HEIGHT	GINGIVAL HEIGHT
	1 mm	2 mm	3 mm	4 mm
R	-	42.302.017.02-2	-	-

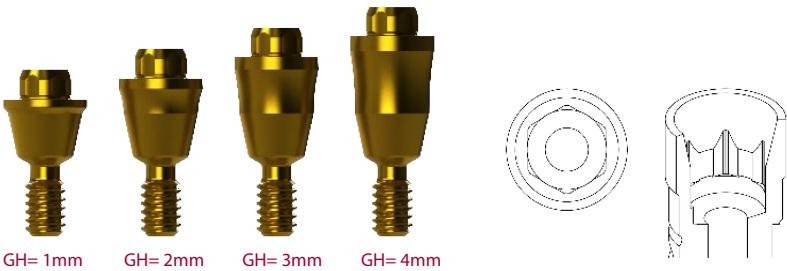
DAS LIBRARIES:
MU SCANBODY DAS_MU_4.5_0017_PREMIUM
DAS_MU_8_0017_PREMIUM
DAS_MU_DS8_0017_PREMIUM
MU SCANALOG DAS_MU_SA_0017_PREMIUM
DYNAMIC μSCANBODY DAS_MU_I/IG_0017_PREMIUM



COMPATIBLE with 0021

MULTI-UNIT				
	GINGIVAL HEIGHT	GINGIVAL HEIGHT	GINGIVAL HEIGHT	GINGIVAL HEIGHT
	1 mm	2 mm	3 mm	4 mm
R	42.302.021.01-2	42.302.021.02-2	42.302.021.03-2	42.302.021.04-2

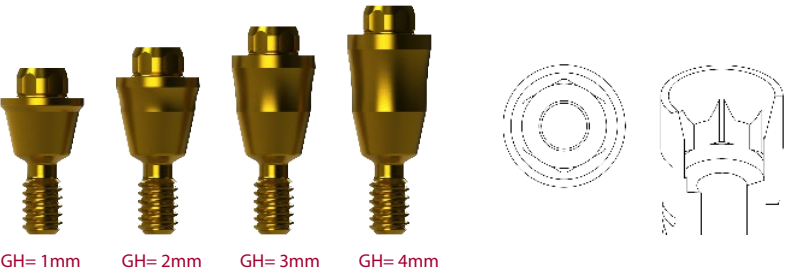
DAS LIBRARIES:
MU SCANBODY DAS_MU_4.5_0021_PREMIUM
DAS_MU_8_0021_PREMIUM
DAS_MU_DS8_0021_PREMIUM
MU SCANALOG DAS_MU_SA_0021_PREMIUM
DYNAMIC μSCANBODY DAS_MU_I/IG_0021_PREMIUM



COMPATIBLE with 0022

MULTI-UNIT				
	GINGIVAL HEIGHT	GINGIVAL HEIGHT	GINGIVAL HEIGHT	GINGIVAL HEIGHT
	1 mm	2 mm	3 mm	4 mm
R	42.303.022.01-2	42.303.022.02-2	42.303.022.03-2	42.303.022.04-2

DAS LIBRARIES:
MU SCANBODY DAS_MU_4.5_0022_PREMIUM
DAS_MU_8_0022_PREMIUM
DAS_MU_DS8_0022_PREMIUM
MU SCANALOG DAS_MU_SA_0022_PREMIUM
DYNAMIC μSCANBODY DAS_MU_I/IG_0022_PREMIUM



COMPATIBLE with 0024

MULTI-UNIT				
	GINGIVAL HEIGHT	GINGIVAL HEIGHT	GINGIVAL HEIGHT	GINGIVAL HEIGHT
	1 mm	2 mm	3 mm	4 mm
R	-	42.303.024.02-2	42.303.024.03-2	-

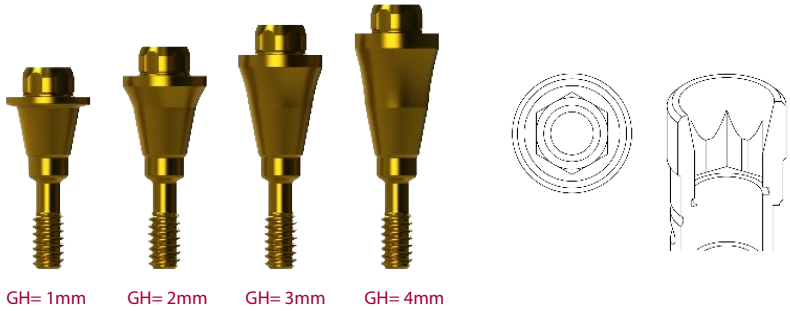
DAS LIBRARIES:
MU SCANBODY DAS_MU_4.5_0024_PREMIUM
DAS_MU_8_0024_PREMIUM
DAS_MU_DS8_0024_PREMIUM
MU SCANALOG DAS_MU_SA_0024_PREMIUM
DYNAMIC μSCANBODY DAS_MU_I/IG_0024_PREMIUM



COMPATIBLE with 0029

MULTI-UNIT				
	GINGIVAL HEIGHT	GINGIVAL HEIGHT	GINGIVAL HEIGHT	GINGIVAL HEIGHT
	1 mm	2 mm	3 mm	4 mm
R	42.302.029.01-2	42.302.029.02-2	42.302.029.03-2	42.302.029.04-2

DAS LIBRARIES:
MU SCANBODY DAS_MU_4.5_0029_PREMIUM
DAS_MU_8_0029_PREMIUM
DAS_MU_DS8_0029_PREMIUM
MU SCANALOG DAS_MU_SA_0029_PREMIUM
DYNAMIC μSCANBODY DAS_MU_I/IG_0029_PREMIUM



COMPATIBLE with 0030

MULTI-UNIT					
	GINGIVAL HEIGHT	GINGIVAL HEIGHT	GINGIVAL HEIGHT	GINGIVAL HEIGHT	GINGIVAL HEIGHT
	1 mm	2 mm	3 mm	4 mm	5 mm
R	42.303.030.01-2	42.303.030.02-2	42.303.030.03-2	42.303.030.04-2	42.303.030.05-2

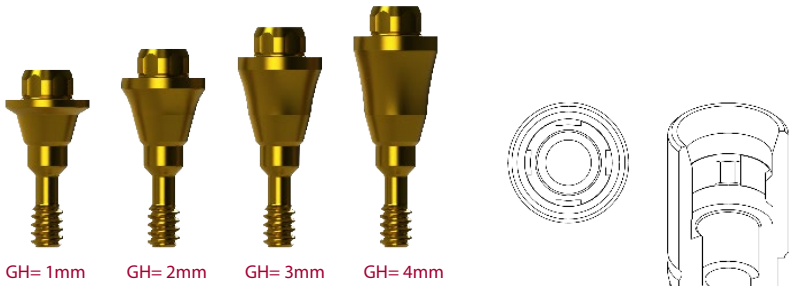
DAS LIBRARIES:
MU SCANBODY DAS_MU_4.5_0030_PREMIUM
DAS_MU_8_0030_PREMIUM
DAS_MU_DS8_0030_PREMIUM
MU SCANALOG DAS_MU_SA_0030_PREMIUM
DYNAMIC μSCANBODY DAS_MU_I/IG_0030_PREMIUM



COMPATIBLE with 0033

MULTI-UNIT				
	GINGIVAL HEIGHT	GINGIVAL HEIGHT	GINGIVAL HEIGHT	GINGIVAL HEIGHT
	1 mm	2 mm	3 mm	4 mm
R	42.302.033.01-2	42.302.033.02-2	42.302.033.03-2	42.302.033.04-2

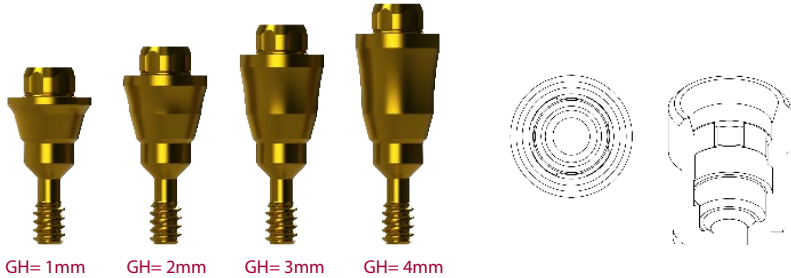
DAS LIBRARIES:
MU SCANBODY DAS_MU_4.5_0033_PREMIUM
DAS_MU_8_0033_PREMIUM
DAS_MU_DS8_0033_PREMIUM
MU SCANALOG DAS_MU_SA_0033_PREMIUM
DYNAMIC μSCANBODY DAS_MU_I/IG_0033_PREMIUM



COMPATIBLE with 0035

MULTI-UNIT				
	GINGIVAL HEIGHT	GINGIVAL HEIGHT	GINGIVAL HEIGHT	GINGIVAL HEIGHT
	1 mm	2 mm	3 mm	4 mm
R	42.303.035.01-2	42.303.035.02-2	42.303.035.03-2	42.303.035.04-2

DAS LIBRARIES:
MU SCANBODY DAS_MU_4.5_0035_PREMIUM
DAS_MU_8_0035_PREMIUM
DAS_MU_DS8_0035_PREMIUM
MU SCANALOG DAS_MU_SA_0035_PREMIUM
DYNAMIC μSCANBODY DAS_MU_I/IG_0035_PREMIUM



COMPATIBLE with 0039

MULTI-UNIT				
	GINGIVAL HEIGHT	GINGIVAL HEIGHT	GINGIVAL HEIGHT	GINGIVAL HEIGHT
	1 mm	2 mm	3 mm	4 mm
R	42.303.039.01-2	-	-	-

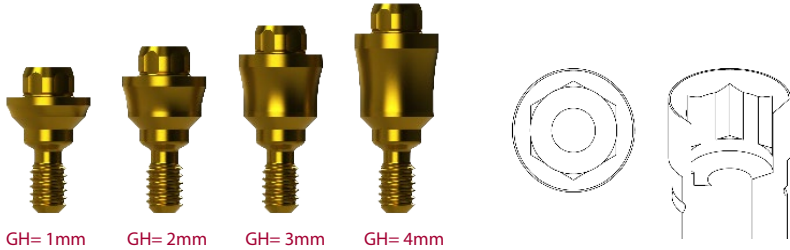
DAS LIBRARIES:
MU SCANBODY DAS_MU_4.5_0039_PREMIUM
DAS_MU_8_0039_PREMIUM
DAS_MU_DS8_0039_PREMIUM
MU SCANALOG DAS_MU_SA_0039_PREMIUM
DYNAMIC μSCANBODY DAS_MU_I/IG_0039_PREMIUM



COMPATIBLE with 0040

MULTI-UNIT				
	GINGIVAL HEIGHT	GINGIVAL HEIGHT	GINGIVAL HEIGHT	GINGIVAL HEIGHT
	1 mm	2 mm	3 mm	4 mm
R	42.302.040.01-2	42.302.040.02-2	42.302.040.03-2	42.302.040.04-2

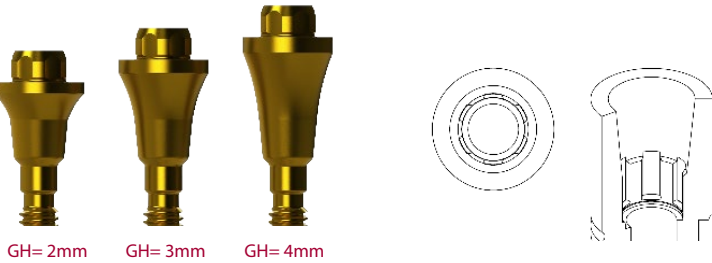
DAS LIBRARIES:
MU SCANBODY DAS_MU_4.5_0040_PREMIUM
DAS_MU_8_0040_PREMIUM
DAS_MU_DS8_0040_PREMIUM
MU SCANALOG DAS_MU_SA_0040_PREMIUM
DYNAMIC μSCANBODY DAS_MU_I/IG_0040_PREMIUM



COMPATIBLE with 0075

MULTI-UNIT				
	GINGIVAL HEIGHT	GINGIVAL HEIGHT	GINGIVAL HEIGHT	GINGIVAL HEIGHT
	1 mm	2 mm	3 mm	4 mm
R	-	42.302.075.02-2	42.302.075.03-2	42.302.075.04-2

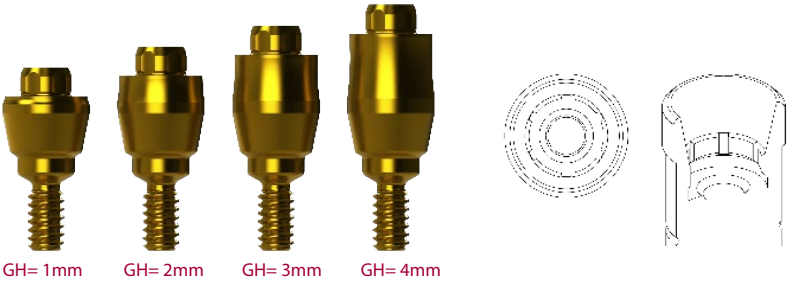
DAS LIBRARIES:
MU SCANBODY DAS_MU_4.5_0075_PREMIUM
DAS_MU_8_0075_PREMIUM
DAS_MU_DS8_0075_PREMIUM
MU SCANALOG DAS_MU_SA_0075_PREMIUM
DYNAMIC μSCANBODY DAS_MU_I/IG_0075_PREMIUM



COMPATIBLE with 0091

MULTI-UNIT				
	GINGIVAL HEIGHT	GINGIVAL HEIGHT	GINGIVAL HEIGHT	GINGIVAL HEIGHT
	1 mm	2 mm	3 mm	4 mm
R	42.303.091.01-2	42.303.091.02-2	42.303.091.03-2	42.303.091.04-2

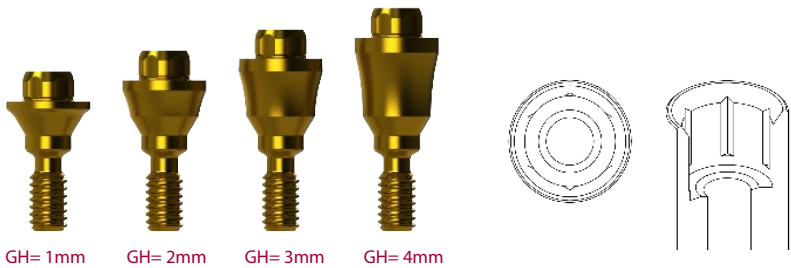
DAS LIBRARIES:
MU SCANBODY DAS_MU_4.5_0091_PREMIUM
DAS_MU_8_0091_PREMIUM
DAS_MU_DS8_0091_PREMIUM
MU SCANALOG DAS_MU_SA_0091_PREMIUM
DYNAMIC μSCANBODY DAS_MU_I/IG_0091_PREMIUM



COMPATIBLE with 0102

MULTI-UNIT				
	GINGIVAL HEIGHT	GINGIVAL HEIGHT	GINGIVAL HEIGHT	GINGIVAL HEIGHT
	1 mm	2 mm	3 mm	4 mm
R	42.302.102.01-2	42.302.102.02-2	42.302.102.03-2	42.302.102.04-2

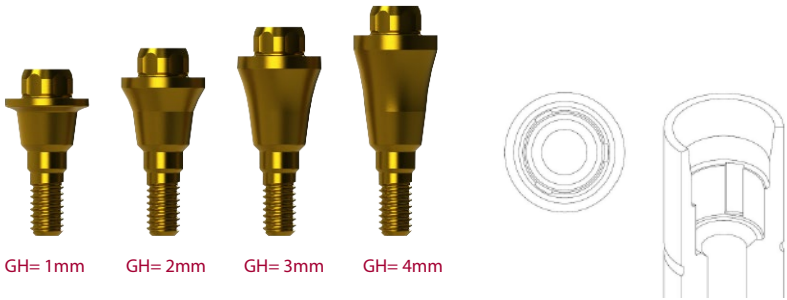
DAS LIBRARIES:
MU SCANBODY DAS_MU_4.5_0102_PREMIUM
DAS_MU_8_0102_PREMIUM
DAS_MU_DS8_0102_PREMIUM
MU SCANALOG DAS_MU_SA_0102_PREMIUM
DYNAMIC μSCANBODY DAS_MU_I/IG_0102_PREMIUM



COMPATIBLE with 0119

MULTI-UNIT				
	GINGIVAL HEIGHT	GINGIVAL HEIGHT	GINGIVAL HEIGHT	GINGIVAL HEIGHT
	1 mm	2 mm	3 mm	4 mm
R	42.301.119.01-2	42.301.119.02-2	42.301.119.03-2	42.301.119.04-2

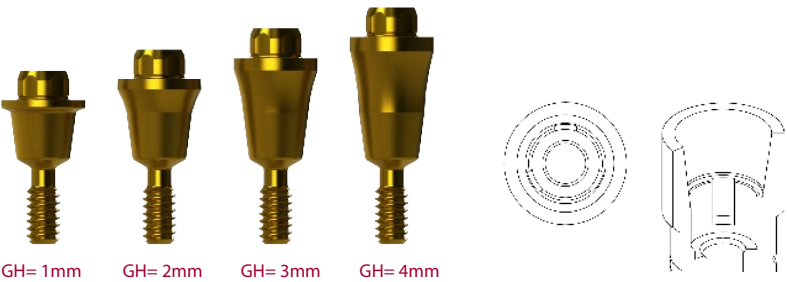
DAS LIBRARIES:
MU SCANBODY DAS_MU_4.5_0119_PREMIUM
DAS_MU_8_0119_PREMIUM
DAS_MU_DS8_0119_PREMIUM
MU SCANALOG DAS_MU_SA_0119_PREMIUM
DYNAMIC μSCANBODY DAS_MU_I/IG_0119_PREMIUM



COMPATIBLE with 0120

MULTI-UNIT				
	GINGIVAL HEIGHT	GINGIVAL HEIGHT	GINGIVAL HEIGHT	GINGIVAL HEIGHT
	1 mm	2 mm	3 mm	4 mm
R	42.303.121.01-2	42.303.121.02-2	42.303.121.03-2	42.303.121.04-2

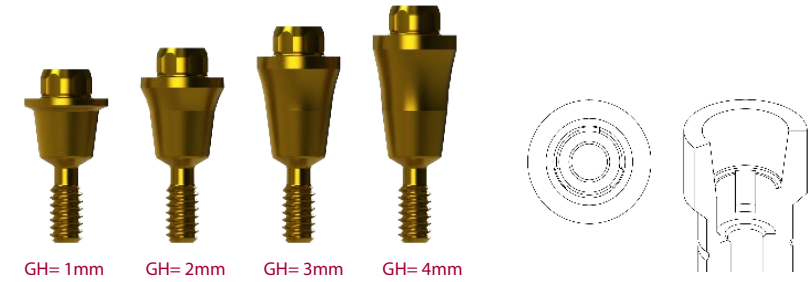
DAS LIBRARIES:
MU SCANBODY DAS_MU_4.5_0120_PREMIUM
DAS_MU_8_0120_PREMIUM
DAS_MU_DS8_0120_PREMIUM
MU SCANALOG DAS_MU_SA_0120_PREMIUM
DYNAMIC μSCANBODY DAS_MU_I/IG_0120_PREMIUM



COMPATIBLE with 0121

MULTI-UNIT				
	GINGIVAL HEIGHT	GINGIVAL HEIGHT	GINGIVAL HEIGHT	GINGIVAL HEIGHT
	1 mm	2 mm	3 mm	4 mm
R	42.303.121.01-2	42.303.121.02-2	42.303.121.03-2	42.303.121.04-2

DAS LIBRARIES:
MU SCANBODY DAS_MU_4.5_0121_PREMIUM
DAS_MU_8_0121_PREMIUM
DAS_MU_DS8_0121_PREMIUM
MU SCANALOG DAS_MU_SA_0121_PREMIUM
DYNAMIC μSCANBODY DAS_MU_I/IG_0121_PREMIUM

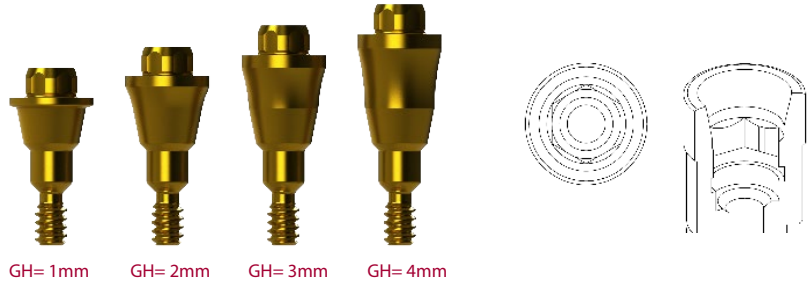


GH= 1mm GH= 2mm GH= 3mm GH= 4mm

COMPATIBLE with 0125

MULTI-UNIT				
	GINGIVAL HEIGHT	GINGIVAL HEIGHT	GINGIVAL HEIGHT	GINGIVAL HEIGHT
	1 mm	2 mm	3 mm	4 mm
R	42.303.125.01-2	42.303.125.02-2	42.303.125.03-2	42.303.125.04-2

DAS LIBRARIES:
MU SCANBODY DAS_MU_4.5_0125_PREMIUM
DAS_MU_8_0125_PREMIUM
DAS_MU_DS8_0125_PREMIUM
MU SCANALOG DAS_MU_SA_0125_PREMIUM
DYNAMIC μSCANBODY DAS_MU_I/IG_0125_PREMIUM

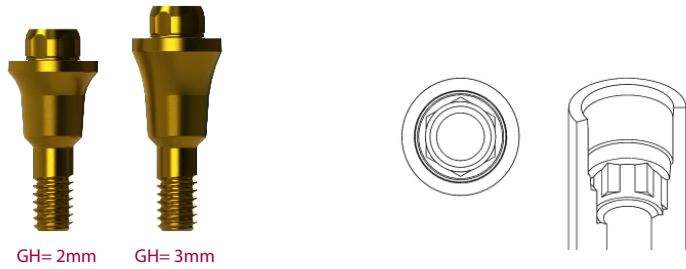


GH= 1mm GH= 2mm GH= 3mm GH= 4mm

COMPATIBLE with 0152

MULTI-UNIT				
	GINGIVAL HEIGHT	GINGIVAL HEIGHT	GINGIVAL HEIGHT	GINGIVAL HEIGHT
	1 mm	2 mm	3 mm	4 mm
R	-	42.300.152.03-2	42.300.152.02-2	-

DAS LIBRARIES:
MU SCANBODY DAS_MU_4.5_0152_PREMIUM
DAS_MU_8_0152_PREMIUM
DAS_MU_DS8_0152_PREMIUM
MU SCANALOG DAS_MU_SA_0152_PREMIUM
DYNAMIC μSCANBODY DAS_MU_I/IG_0152_PREMIUM



GH= 2mm GH= 3mm

COMPATIBLE with 0159

MULTI-UNIT				
	GINGIVAL HEIGHT	GINGIVAL HEIGHT	GINGIVAL HEIGHT	GINGIVAL HEIGHT
	1 mm	2 mm	3 mm	4 mm
R	42.300.159.01-2	42.300.159.02-2	42.300.159.03-2	42.300.159.04-2

DAS LIBRARIES:
MU SCANBODY DAS_MU_0159_PREMIUM
DAS_MU_8_0159_PREMIUM
DAS_MU_DS8_0159_PREMIUM
MU SCANALOG DAS_MU_SA_0159_PREMIUM
DYNAMIC μSCANBODY DAS_MU_I/IG_0159_PREMIUM

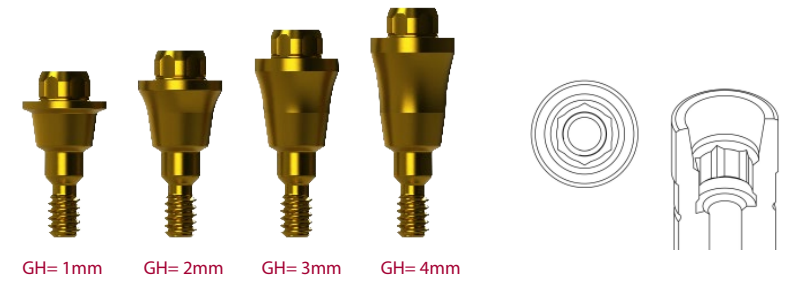


GH= 1mm GH= 2mm GH= 3mm GH= 4mm

COMPATIBLE with 0186

MULTI-UNIT				
	GINGIVAL HEIGHT	GINGIVAL HEIGHT	GINGIVAL HEIGHT	GINGIVAL HEIGHT
	1 mm	2 mm	3 mm	4 mm
R	42.303.186.01-2	42.303.186.02-2	42.303.186.03-2	42.303.186.04-2

DAS LIBRARIES:
MU SCANBODY DAS_MU_4.5_0186_PREMIUM
DAS_MU_8_0186_PREMIUM
DAS_MU_DS8_0186_PREMIUM
MU SCANALOG DAS_MU_SA_0186_PREMIUM
DYNAMIC μSCANBODY DAS_MU_I/IG_0186_PREMIUM



GH= 1mm GH= 2mm GH= 3mm GH= 4mm

COMPATIBLE with 0169

MULTI-UNIT				
	GINGIVAL HEIGHT	GINGIVAL HEIGHT	GINGIVAL HEIGHT	GINGIVAL HEIGHT
	1 mm	2 mm	3 mm	4 mm
R	42.302.169.01-2	42.302.169.02-2	42.302.169.03-2	42.302.169.04-2

DAS LIBRARIES:
MU SCANBODY DAS_MU_0169_PREMIUM
DAS_MU_8_0169_PREMIUM
DAS_MU_DS8_0169_PREMIUM
MU SCANALOG DAS_MU_SA_0169_PREMIUM
DYNAMIC μSCANBODY DAS_MU_I/IG_0169_PREMIUM

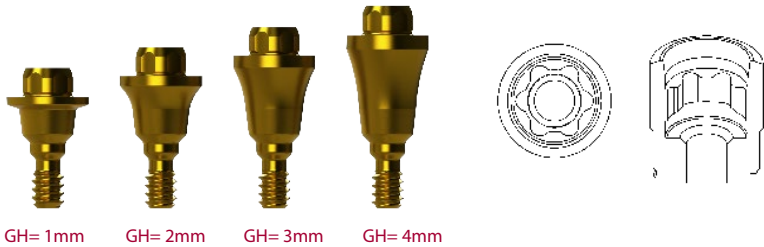


GH= 1mm GH= 2mm GH= 3mm GH= 4mm

COMPATIBLE with 0207

MULTI-UNIT				
	GINGIVAL HEIGHT	GINGIVAL HEIGHT	GINGIVAL HEIGHT	GINGIVAL HEIGHT
	1 mm	2 mm	3 mm	4 mm
R	42.302.207.01-2	42.302.207.02-2	42.302.207.03-2	42.302.207.04-2

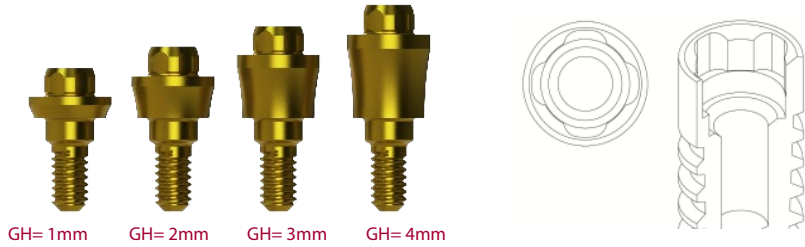
DAS LIBRARIES:
MU SCANBODY DAS_MU_0207_PREMIUM
DAS_MU_8_0207_PREMIUM
DAS_MU_DS8_0207_PREMIUM
MU SCANALOG DAS_MU_SA_0207_PREMIUM
DYNAMIC μSCANBODY DAS_MU_I/IG_0207_PREMIUM



COMPATIBLE with 0257

MULTI-UNIT				
	GINGIVAL HEIGHT	GINGIVAL HEIGHT	GINGIVAL HEIGHT	GINGIVAL HEIGHT
	1 mm	2 mm	3 mm	4 mm
R	42.303.257.01-2	42.303.257.02-2	42.303.257.03-2	42.303.257.04-2

DAS LIBRARIES:
MU SCANBODY DAS_MU_4.5_0257_PREMIUM
DAS_MU_8_0257_PREMIUM
DAS_MU_DS8_0257_PREMIUM
MU SCANALOG DAS_MU_SA_0257_PREMIUM
DYNAMIC μSCANBODY DAS_MU_I/IG_0257_PREMIUM



NOTES

TALLADIUM GUARANTEE

TERMS AND CONDITIONS
These guarantee terms and conditions (“T&C”) cover the entire range of Talladium products (“Products”), manufactured by TALLADIUM ESPAÑA S.L. and distributed by Geoda Medical S.L. or official dealers. The guarantee described in these T&C is exclusively in benefit of the clinician (“Clinician”) and of the dental technician (“Technician”) and not for the benefit of third parties or institutions, including patients.

GUARANTEE PERIOD
TALLADIUM ESPAÑA S.L. offers a lifelong guarantee for its entire range of products starting from the date of issue of the invoice.

GUARANTEE SCOPE
Subject to the limitations and exceptions described in these T&C, TALLADIUM ESPAÑA S.L. will offer the following benefits:

QUALITY: If there are defects in the materials or in the manufacturing of the Product, TALLADIUM ESPAÑA S.L. will replace the Product with no additional cost.

SAFETY: If, having complied with all the product indications, the prosthesis should have to be made again, due to a fault in the Dynamic Abutment® or Dynamic Titanium Base® system, TALLADIUM ESPAÑA S.L. will replace the abutments and screws necessary to remake the prosthesis, as well as the costs derived from its manufacturing.

In case of having used our products and having complied with all the product indications, the implants suffer any damage, TALLADIUM ESPAÑA S.L. will pay the cost of the implants. This coverage will only be valid during the first 6 months after the collocation of the prosthesis which includes our products.

CLAIM REQUIREMENTS AND PROCEDURE
To receive the benefits indicated in these T&C, the treating Clinician must satisfy the following requirements:
a) The claim must be notified to TALLADIUM ESPAÑA S.L. within (30) days since the date the claimed defect was detected.
b) This requires that the Clinician or Technician must contact the customer service department by telephone or by e-mail to make the claim.
c) A claim form will be completed, which, together with a document or report which justifies the faulty Product and the faulty Product itself, will be sent by the customer to TALLADIUM ESPAÑA S.L. offices, within the previously indicated period.
d) Clinicians or Technicians presenting a claim in agreement with these T&C must be up to date in any payments owing to TALLADIUM ESPAÑA S.L. or to any of its subsidiaries, at the time when the claim form is presented.
e) All the use procedures of our Products must be carried out in agreement with the instructions of TALLADIUM ESPAÑA S.L. as well as in accordance with commonly accepted dentistry practices.
f) The expenses derived from this procedure will be assumed by the customer. The return shipping costs will be assumed by TALLADIUM ESPAÑA S.L. in all those cases covered by these T&C.

Regardless of the guarantee rights, claims should be notified as soon as possible in order to comply with regulatory requirements.

GENERAL LIMITATIONS OF THIS GUARANTEE
With the exception of the guarantee described in these T&C, neither TALLADIUM ESPAÑA S.L. nor its representatives, nor third parties manufacturing or distributing the Products, represent or offer a guarantee, agreement or any other express or implicit, oral or written, commitment, with respect to the Products (without limitation), including guarantees involved in the marketing, durability or suitability for individual uses or purposes.

In addition and within the maximum extent permitted by the relative law, TALLADIUM ESPAÑA S.L. rejects (on its own behalf, and on behalf of its representatives and third parties that manufacture or distribute Products) any responsibility with respect to any direct or indirect damage caused, which may result from or be a consequence of the design, composition of the dental prosthesis into which the Products are integrated.

GUARANTEE EXCLUSIONS
TALLADIUM ESPAÑA S.L. limits this guarantee to:
- Transformed abutments that form part of the dental prosthesis. But not the screws used to anchor them.
- Clinical screws that have been in the mouth for more than 2 years.

AMENDMENT OR SUSPENSION OF THE GUARANTEE
TALLADIUM ESPAÑA S.L. reserves the right to amend or withdraw these T&C at any time and without prior notification. Any modification or suspension shall not affect products already placed in patients.

Ed.2019-01



DYNAMIC ABUTMENT® SOLUTIONS

VIRGINIA WOOLF, 17 · 25005 · LLEIDA (SPAIN)
INTERNATIONAL +34 873 450 709
das@dynamicabutment.com
SPAIN +34 973 289 580
spain@dynamicabutment.com

Dynamic Abutment® Solutions is a trademark of the manufacturer Talladium España S.L.
The information included in this catalogue is exclusively addressed to professionals in dental sector.

All commercial trademarks mentioned herein are fully registered by their respective companies, and the images that appear are just to provide an orientation.
Talladium reserves the right to modify this document without previous notice.
Talladium is not responsible for the inadequate execution of these products if the warning indications corresponding to every reference are not contemplated.

All of the products listed in this brochure are marking in accordance with CE legislation. Some of the products are not authorized for sale and distribution or do not have a sales license in some countries according to other legislations (FDA, MDSAP, etc.) Please ask for information: das@dynamicabutment.com



Visit our Online Store to find all our products and compatibilities :
www.dynamicabutmentstore.com



DYNAMIC ABUTMENT® SOLUTIONS

Virginia Woolf, 17

25005 · Lleida · Spain

www.dynamicabutment.com

INTERNATIONAL +34 873 450 709

das@dynamicabutment.com

SPAIN +34 973 289 580

spain@dynamicabutment.com

DYNAMIC ABUTMENT® SOLUTIONS